

Legend

- Barrel
- Flag
- Traffic Flow
- Type B Lights
- Work Area

Stephen Decker
Professional Engineer
NO.57422
561-722-1556

WORK WILL START ON SHEET WM-1 AND WILL MOVE SOUTH APPROX 200-300 FEET PER DAY

CONTRACTOR TO COORDINATE RESIDENTIAL ACCESS ROUTES WITH HOMEOWNERS DIRECTLY

B&B
Underground Construction

Certificate of Completion
KYLE LARODE
 Has Completed a Florida Department of Transportation Approved Temporary Traffic Control (TTC) Advanced (Retrainer) Course.

08/25/2024 Date Expires
 HSE Jameson McCauley HSE Instructor
 43187
 Metro Florida Safety Council
 10000 W. US Highway 1
 Palm Beach Gardens, FL 33418
 561-991-1100
 www.metrofloridasafety.com

FDOT
 Florida Department of Transportation
 10000 W. US Highway 1
 Palm Beach Gardens, FL 33418
 561-991-1100
 www.floridadot.com



Date: 8/20/2021 **Author:** Kyle Larode
Comments:
 Contractor: B&B Underground Construction, Inc.
 Traffic Control Shall be Installed and Maintained in Accordance with Project Plans. The Current Edition of the Florida DOT Standards. The Standard Specifications for Road & Bridge Construction and the Manual on Uniform Traffic Control Devices, Current Design Standards 102- 600 Series and Palm Beach County Traffic Regulations, Latest Edition, as Minimum Criteria.
 Contractor is Fully Responsible of Proper Maintenance.

Figure 6H-20. Detour for a Closed Street (TA-20)

Certificate of Completion
KYLE LARODE
Has Completed a Florida Department of Transportation Approved Temporary Traffic Control (TTC) Advanced (Refresher) Course.

09/20/2014
Date Expires

146
FDOT Project #

Arnell McCarty
Individual

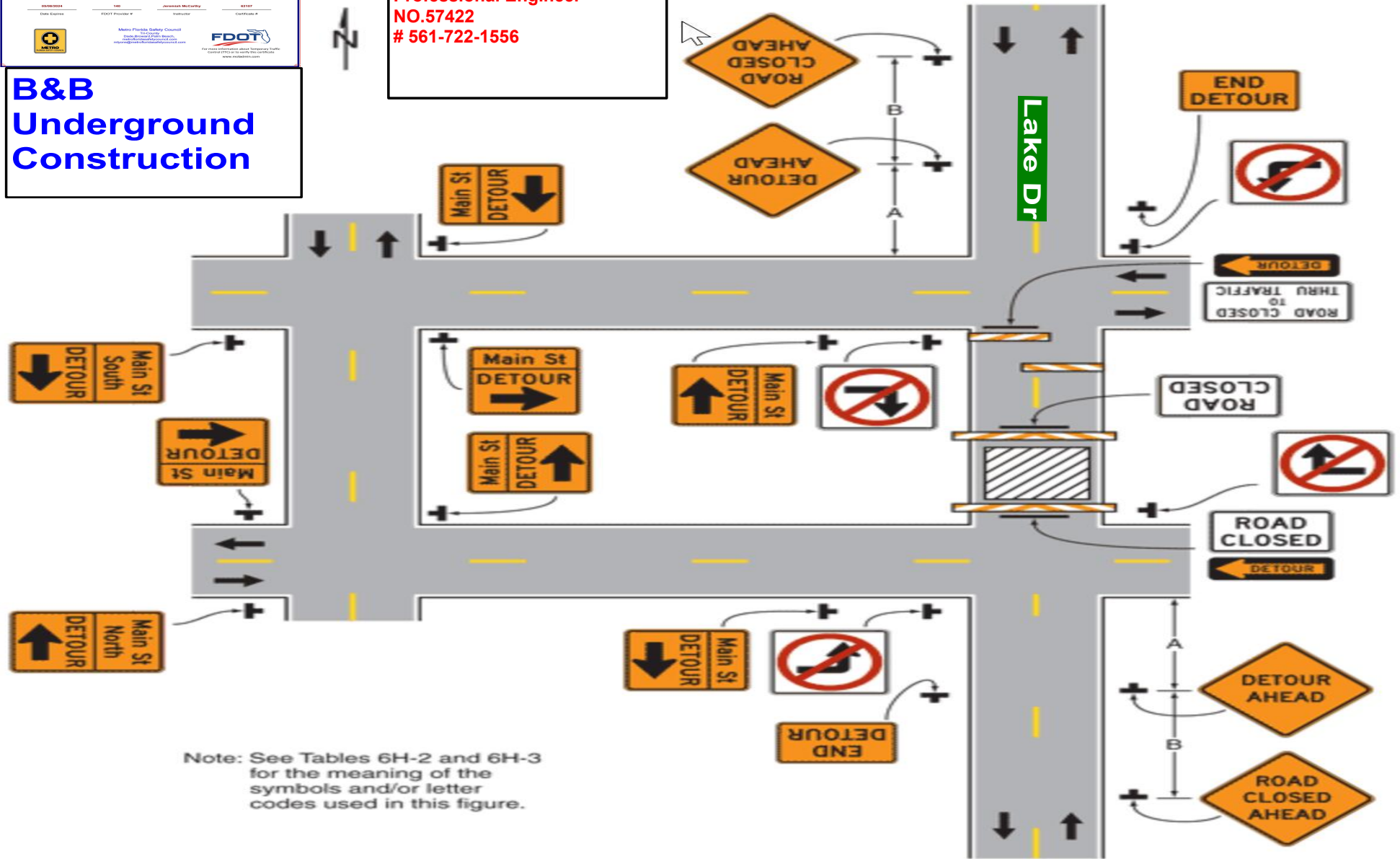
61107
Certificate #

Metro Florida Safety Council
10000 NW 22nd Ave.
Miami, FL 33187
www.metrofloridasafety.com

FDOT
FLORIDA DEPARTMENT OF TRANSPORTATION
605 North US Highway
Tallahassee, FL 32309
www.floridadot.com

**B&B
Underground
Construction**

**Stephen Decker
Professional Engineer
NO.57422
561-722-1556**



Note: See Tables 6H-2 and 6H-3 for the meaning of the symbols and/or letter codes used in this figure.

Typical Application 20