

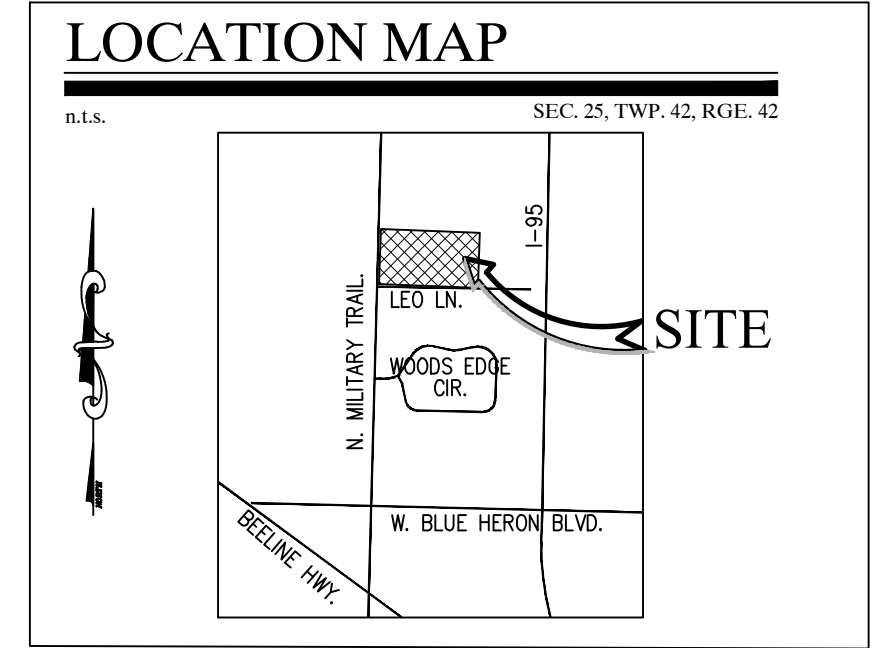
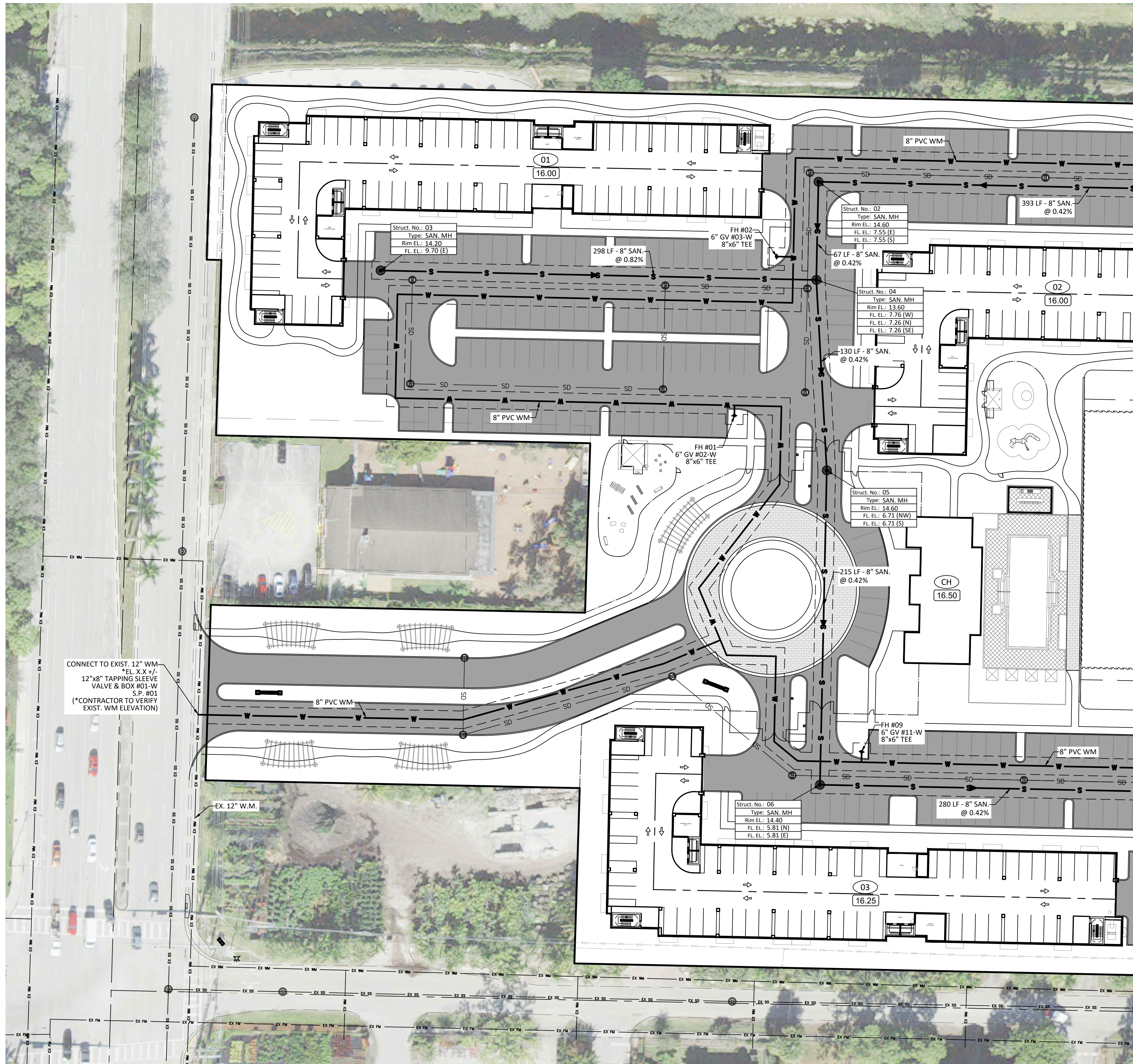
ALL ELEVATIONS SHOWN IN NAVD88 UNLESS OTHERWISE NOTED
CONVERSION: NAVD88 = NGVD - 1.54'

LEGEND

- PROPOSED WATER LINE (SIZE NOTED)
- PROPOSED GATE VALVE AND BOX
- PROPOSED REDUCER
- FIRE HYDRANT
- SAMPLE POINT
- EXWM — EXISTING WATER LINE
- EXGM — EXISTING GATE VALVE
- EXSD — EXISTING PIPE AND INLET
- PROPOSED SAN. SEW. SERVICE
- C.O. — CLEANOUT (C.O.)
- EXSAN — EXISTING SANITARY SEWER LINE
- DOUBLE WATER SERVICE
- SINGLE WATER SERVICE
- DOUBLE SEWER SERVICE
- SINGLE SEWER SERVICE

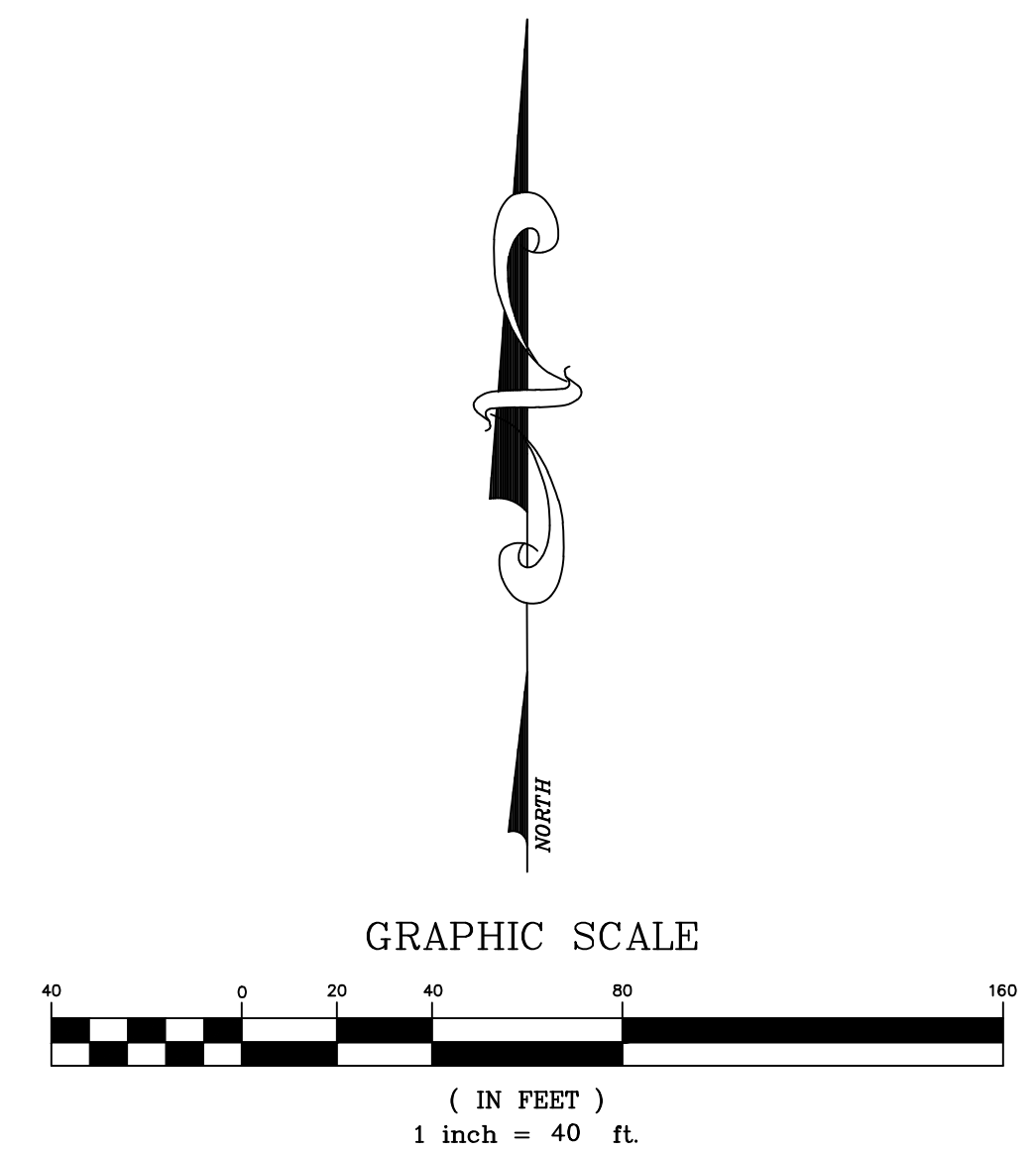


CONTRACTOR NOTE:
CONTRACTOR TO VERIFY DEPTH AND LOCATION OF EXISTING UTILITIES PRIOR TO ANY CONSTRUCTION.



ESTIMATED WATER & SEWER DEMANDS:
47.08 GPM (AVG.), 188.33.5 GPD (PEAK)
ESTIMATED REQUIRED FIRE FLOW = 1,500 GPM

ESTIMATED DRAINAGE DEMANDS:
STORAGE FOR 1" OVER ENTIRE SITE AREA PROVIDED IN PROPOSED LAKE SYSTEM PRIOR TO OFFSITE DISCHARGE



BY:	
DATE:	
REVISIONS:	
FILE NAME:	9698WS.dwg

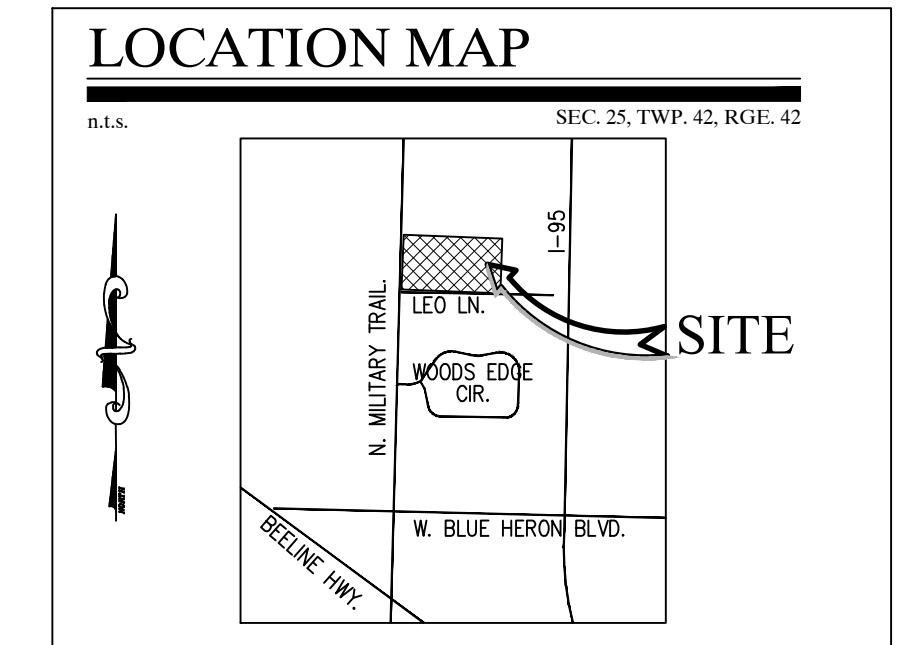
CAULFIELD & WHEELER, INC.
CIVIL ENGINEERING - LAND PLANNING
LANDSCAPE ARCHITECTURE - SURVEYING
7900 GLADES ROAD - SUITE 100
BOCA RATON, FLORIDA 33434
PHONE (561) 392-1991 / FAX (561) 750-1452

**RIVIERA BEACH MULTIFAMILY
CONCEPTUAL
WATER DISTRIBUTION & SANITARY SEWER PLAN**
RIVIERA BEACH, FLORIDA

DATE 01/19/2022
DRAWN BY RDW
F.B./ PG. N/A
SCALE 1"=40'

Ryan Wheeler
RYAN D. WHEELER
PROFESSIONAL ENGINEER
LICENSE NO. 71477
STATE OF FLORIDA
FOR THE FIRM
DATE: Jan 19, 2022

JOB #9698
SHT. NO.
WS-01
OF 02 SHEETS



BY	
DATE	
REVISIONS	
FILE NAME	969WS.dwg

CAULFIELD & WHEELER, INC.
 CIVIL ENGINEERING - LAND PLANNING
 LANDSCAPE ARCHITECTURE - SURVEYING
 7900 GLADES ROAD - SUITE 100
 BOCA RATON, FLORIDA 33434
 PHONE (561)-592-1991 / FAX (561)-750-1452

**RIVIERA BEACH MULTIFAMILY
 CONCEPTUAL
 WATER DISTRIBUTION & SANITARY SEWER PLAN**
 RIVIERA BEACH, FLORIDA

DATE 01/19/2022
 DRAWN BY RDW
 F.B./ P.C. N/A
 SCALE 1"=40'

Ryan Wheeler
 RYAN D. WHEELER
 PROFESSIONAL ENGINEER
 LICENSE NO. 71477
 STATE OF FLORIDA
 - FOR THE FIRM -
 DATE Jan 19, 2022

JOB #9698
 SHT. NO.
WS-02
 OF 02 SHEETS

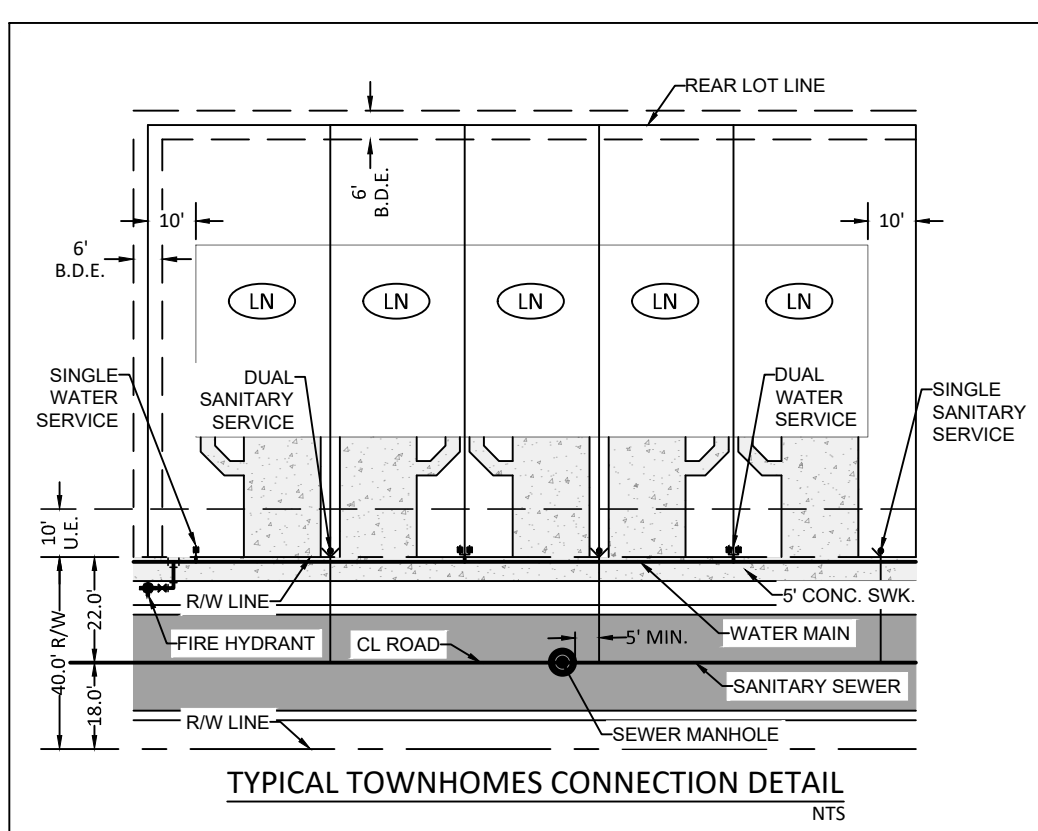
LEGEND

- PROPOSED WATER LINE (SIZE NOTED)
- PROPOSED GATE VALVE AND BOX
- PROPOSED REDUCER
- FIRE HYDRANT
- SAMPLE POINT
- EXWM — EXISTING WATER LINE
- EXGV — EXISTING GATE VALVE
- EXSD — EXISTING PIPE AND INLET
- PROPOSED SANITARY SEWER LINE
- PROPOSED SAN. SEW. SERVICE
- C.O. — CLEANOUT (C.O.)
- EXSAN — EXISTING SANITARY SEWER LINE
- DOUBLE WATER SERVICE
- SINGLE WATER SERVICE
- DOUBLE SEWER SERVICE
- SINGLE SEWER SERVICE

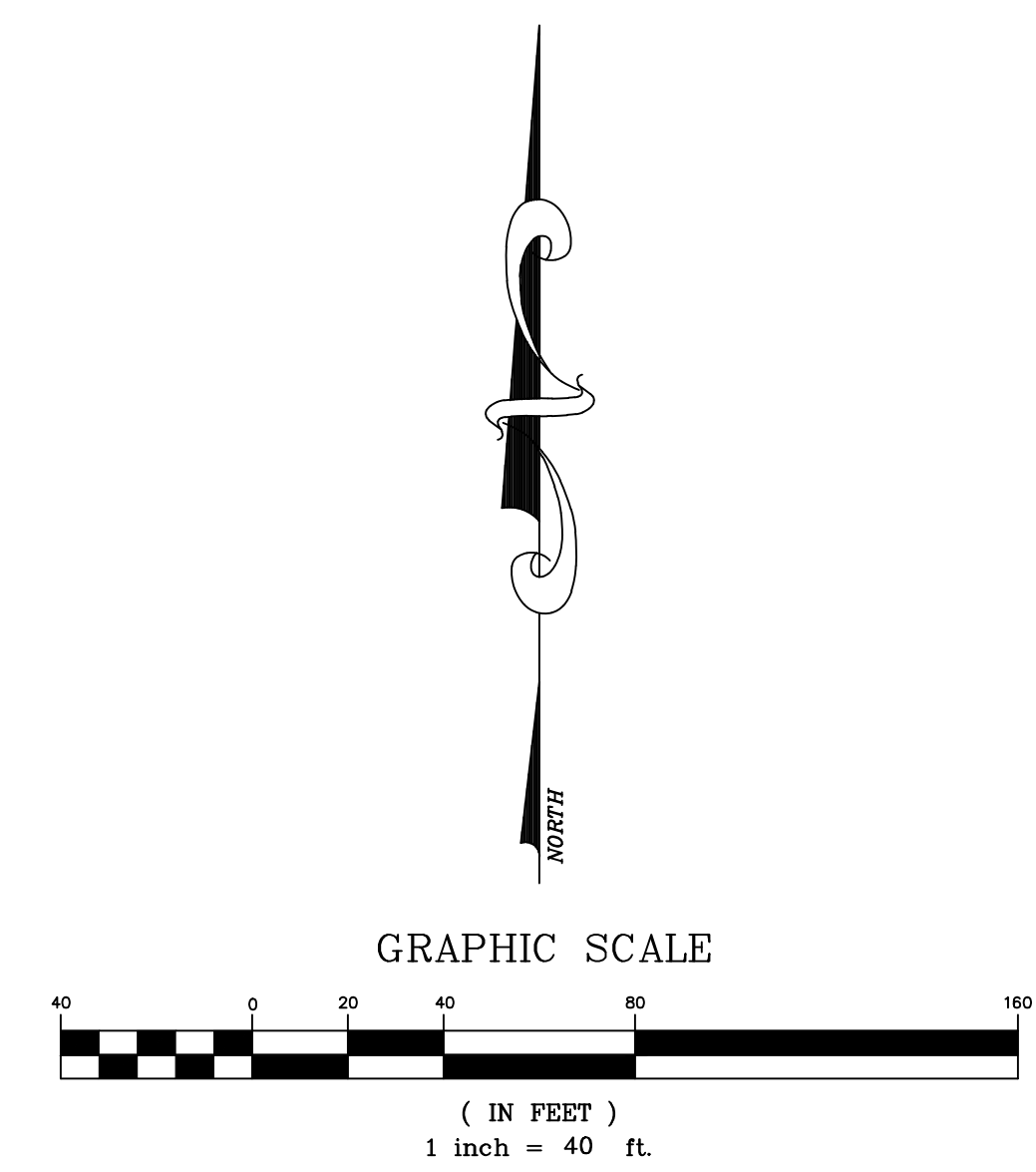
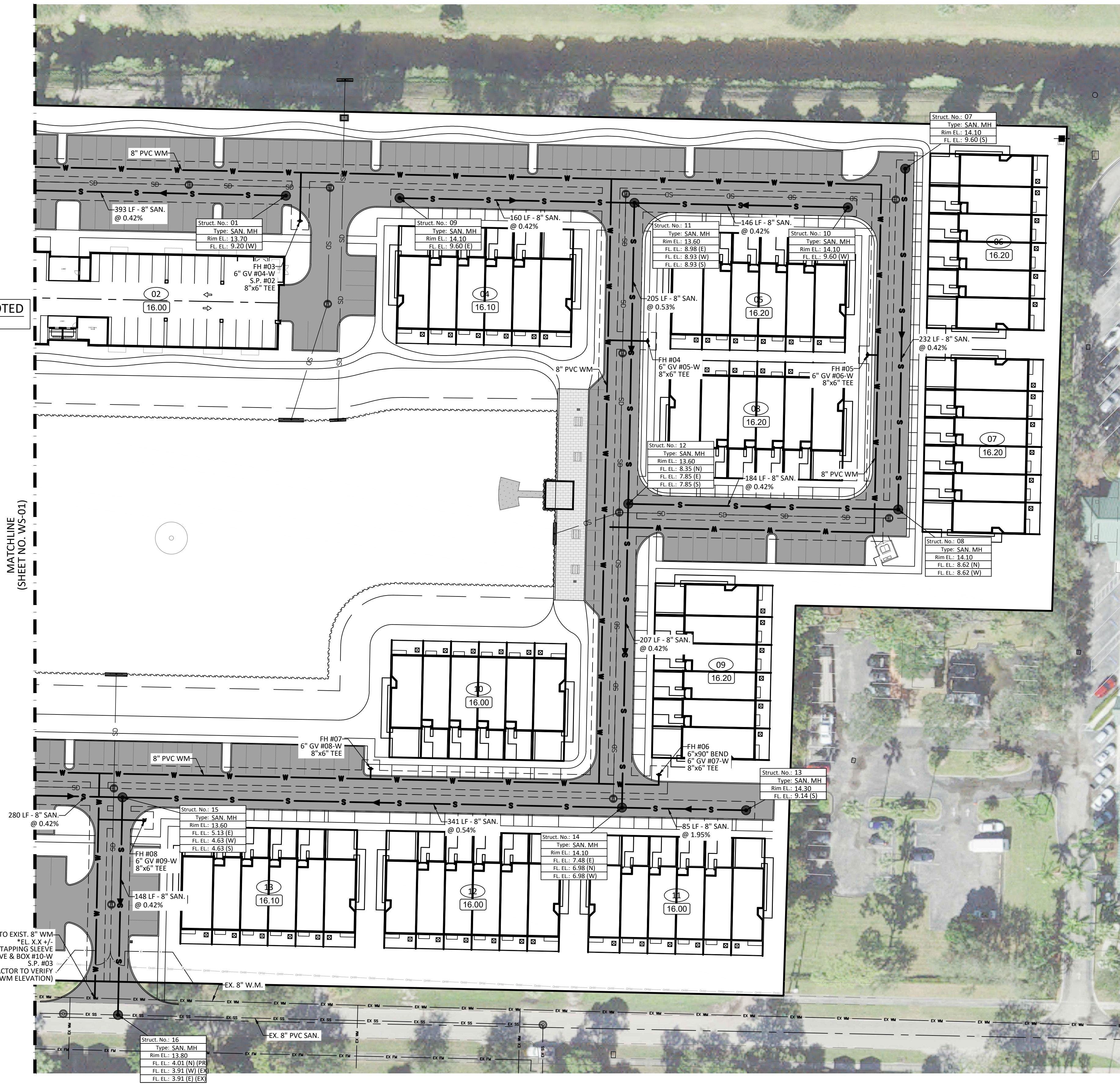
ALL ELEVATIONS SHOWN IN NAVD88 UNLESS OTHERWISE NOTED
 CONVERSION: NAVD88 = NGVD - 1.54'

Call 48 hours before you dig
 It's the Law!
 1-800-432-4770
 Sunshine State One Call of Florida, Inc.

CONTRACTOR NOTE:
 CONTRACTOR TO VERIFY DEPTH AND LOCATION OF EXISTING UTILITIES PRIOR TO ANY CONSTRUCTION.



CONNECT TO EXIST. 8" WM
 *EL. X.X +/-
 8"x8" TAPPING SLEEVE
 VALVE & BOX #10-W
 S.P. #03
 (*CONTRACTOR TO VERIFY EXIST. WM ELEVATION)



MATCHLINE
 (SHEET NO. WS-01)