

# PROPOSED FACILITY

1463-1481 MARTIN LUTHER KING JR. BOULEVARD, RIVIERA BEACH, FLORIDA

DECEMBER 14, 2021 #21318

©CORNERSTONE ARCHITECTS LTD. 2021





**EAST ELEVATION:**

PRECAST CONCRETE WALL PANEL WITH REVEALS TO BE STAINED - TYP.

9' x 10' INSULATED DOCK EQUIPMENT TYP. @ (61) LOCATIONS

3'-0" x 7'-0" 1" INSULATED TINTED CLERESTORY WINDOWS IN ANODIZED ALUMINUM FRAMES

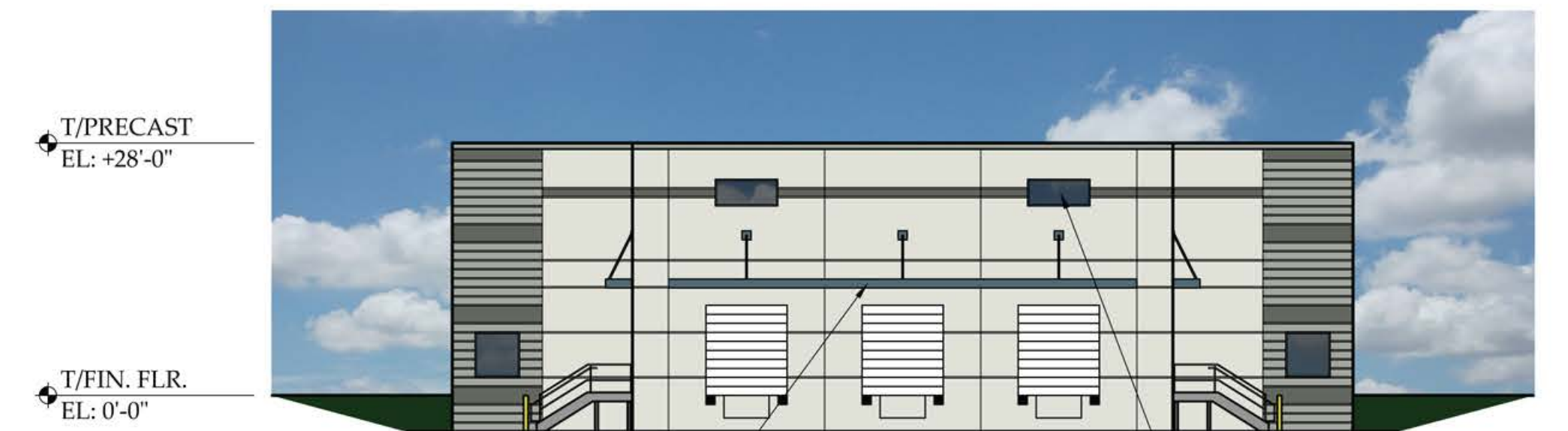
5'-0" x 5'-0" 1" INSULATED TINTED WINDOWS IN ANODIZED ALUMINUM FRAMES



**NORTH ELEVATION:**

CANOPY

1" INSULATED TINTED GLAZING IN ANODIZED ALUMINUM FRAMES W/ THERMAL BREAK



**SOUTH ELEVATION:**

CANOPY

3'-0" x 7'-0" 1" INSULATED TINTED CLERESTORY WINDOWS IN ANODIZED ALUMINUM FRAMES



**WEST ELEVATION:**

PRECAST CONCRETE WALL PANEL WITH REVEALS TO BE STAINED - TYP.

INSULATED METAL DOOR AND FRAME, PAINTED - TYP.

9' x 10' INSULATED DOCK EQUIPMENT TYP. @ (61) LOCATIONS

GALVANIZED METAL STAIR - TYP.



	DARK FIELD COLOR: SHERWIN WILLIAMS NIGHT OWL SW7061
	LIGHT FIELD COLOR: SHERWIN WILLIAMS UNUSUAL GRAY SW7059
	WHITE FIELD COLOR: SHERWIN WILLIAMS RESERVED WHITE SW7056
	ACCENT/CANOPY: SHERWIN WILLIAMS WATERLOO SW9141

# PROPOSED FACILITY

1463-1481 MARTIN LUTHER KING JR. BOULEVARD, RIVIERA BEACH, FLORIDA

©CORNERSTONE ARCHITECTS LTD. 2021

DECEMBER 14, 2021 #21318





# PROPOSED FACILITY

1463-1481 MARTIN LUTHER KING JR. BOULEVARD, RIVIERA BEACH, FLORIDA

DECEMBER 14, 2021 #21318

©CORNERSTONE ARCHITECTS LTD. 2021

