



Landscape Architects
Planners
Environmental
Consultants

1907 Commerce Lane
Suite 101
Jupiter, Florida 33458
561-575-9557
561-575-5260 FAX
www.2gho.com

Preliminary Landscape Plan Riviera Beach LTL City of Riviera Beach, Florida

Designed: _____ PSS
Drawn: _____ PSS
Approved: _____ GGG/EOM/MTH
Date: 12-15-21
Job no. 21-0807
Revisions: 2-17-22

8ea1

LA 0000530

Sheet Title:
Preliminary
Landscape
Plan

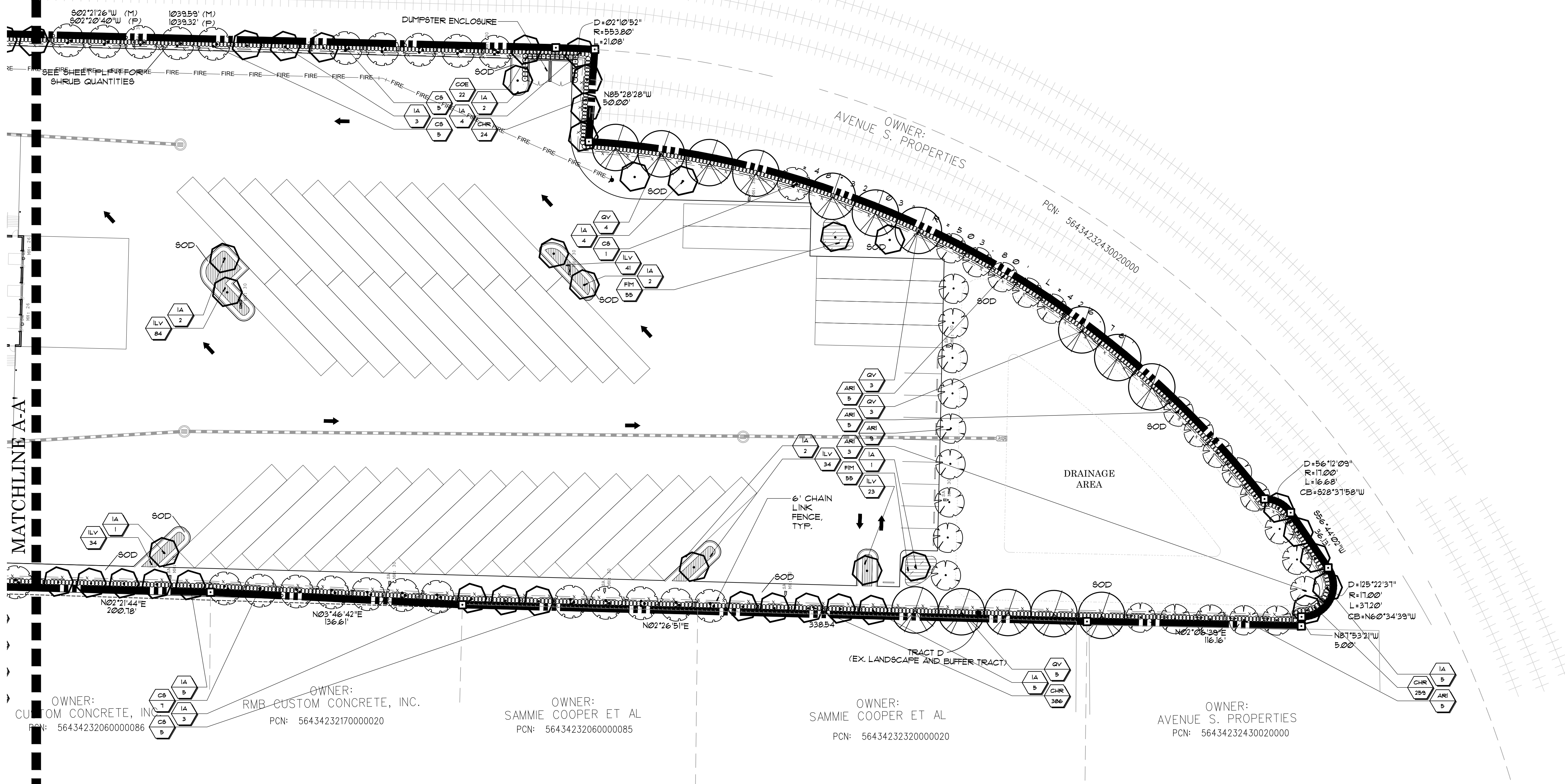
Scale: 1"=30'

Sheet No.

PLP-2

21-0807

VNER
DEPARTMENT
SPORATION PCN: 56434232290010000



PLANT LEGEND:

- Eagleston Holly
- Florida Flame Maple
- Live Oak
- Silver Buttonwood
- Red Tip Cocoplum Hedge
- Green Buttonwood Hedge
- Ilex Vomitoria 'Stokes Dwarf'
- Ficus 'Green Island'

LANDSCAPE NOTES:

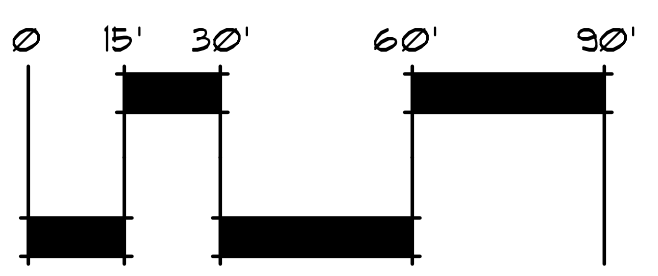
- THE LANDSCAPE ARCHITECT OF RECORD SHALL VERIFY THAT THE INSTALLATION COMPLIES WITH THE APPROVED PLAN OF RECORD. THIS VERIFICATION INCLUDES THE SPECIES (TYPE, QUANTITY, AND OTHER ORIGINAL PLANTING, SPECIFICATIONS) DESIGN OR LOCATION, IRRIGATION, AND ALL OTHER LANDSCAPE STRUCTURES AND MATERIAL USED IN ACCORDANCE WITH THE SITE PLAN.
- ALL PLANTING AREAS SHALL RECEIVE 100% COVERAGE FROM A FULLY AUTOMATIC IRRIGATION SYSTEM, EQUIPPED WITH A RAIN SENSOR AND SHALL BE DESIGNED IN ACCORDANCE TO SECTION 20-124 OF RIVIERA BEACH LANDSCAPE SECTION.
- IRRIGATION SOURCE SHALL BE POTABLE OR WELL WATER SOURCE.
- ALL PLANTING BEDS/ISLANDS SHALL BE FREE OF SHELLROCK THREE (3) AND CONSTRUCTION DEBRIS, EXCAVATED TO A DEPTH OF 30" OR TO CLEAN NATIVE SOILS AND BACKFILLED WITH THE SPECIFIED BACKFILL MIXTURE
- ALL TREES UNDER FPL POWER LINES ARE REQUIRED TO COMPLY WITH THE FPL PLANT THE RIGHT TREE IN THE RIGHT PLACE' GUIDELINES.
- ALL LANDSCAPE ISLANDS SHALL INCORPORATE THE INSTALLATION OF MOUNDING OF NATIVE SOILS A MIN. OF 6" ABOVE THE TOP OF CURB.
- ALL PLANT MATERIAL SHALL MEET THE FLORIDA GRADES AND STANDARDS OF FL. #1 QUALITY OR BETTER.
- THE EXISTENCE, EXACT LOCATIONS AND DEPTHS OF UTILITIES DEPICTED ON DRAWINGS AND PLANS PROVIDED BY THE CITY OF RIVIERA BEACH UTILITY DISTRICT (CRBUD), SHALL BE FIELD VERIFIED BY THE CONTRACTOR PRIOR TO CONSTRUCTION. THE CRBUD ASSUMES NO RESPONSIBILITY FOR ANY POTENTIAL UTILITY CONFLICTS. IF IT IS DETERMINED THAT UTILITIES DEPICTED ON DRAWINGS AND PLANS PROVIDED BY CRBUD ARE NON-EXISTENT OR PARTIALLY EXISTENT, THE CRBUD ASSUMES NO RESPONSIBILITY FOR CONSTRUCTION OF THESE UTILITIES.
- THE CONTRACTOR IS RESPONSIBLE FOR ANY DAMAGE DONE TO CRBUD UTILITIES AS A RESULT OF THIS WORK.
- ANY WATER AND/OR SEWER CONNECTIONS MUST BE COORDINATED AND SUPERVISED BY UTILITY DISTRICT PERSONNEL. PLEASE GIVE 72 HOURS' NOTICE FOR CONNECTIONS.

AMENDMENT STAMPS:

Blank area for amendment stamps.

ZONING STAMPS:

Blank area for zoning stamps.



FILE: C:\RIVIERA BEACH\PLP-2\0807\DRAWING FILES\CURRENT\210807-01-PLP PRELIMINARY LANDSCAPE PLAN.DWG
PLOTTED: 2/16/22 AT 10:56AM BY DSJENSEN XREFS