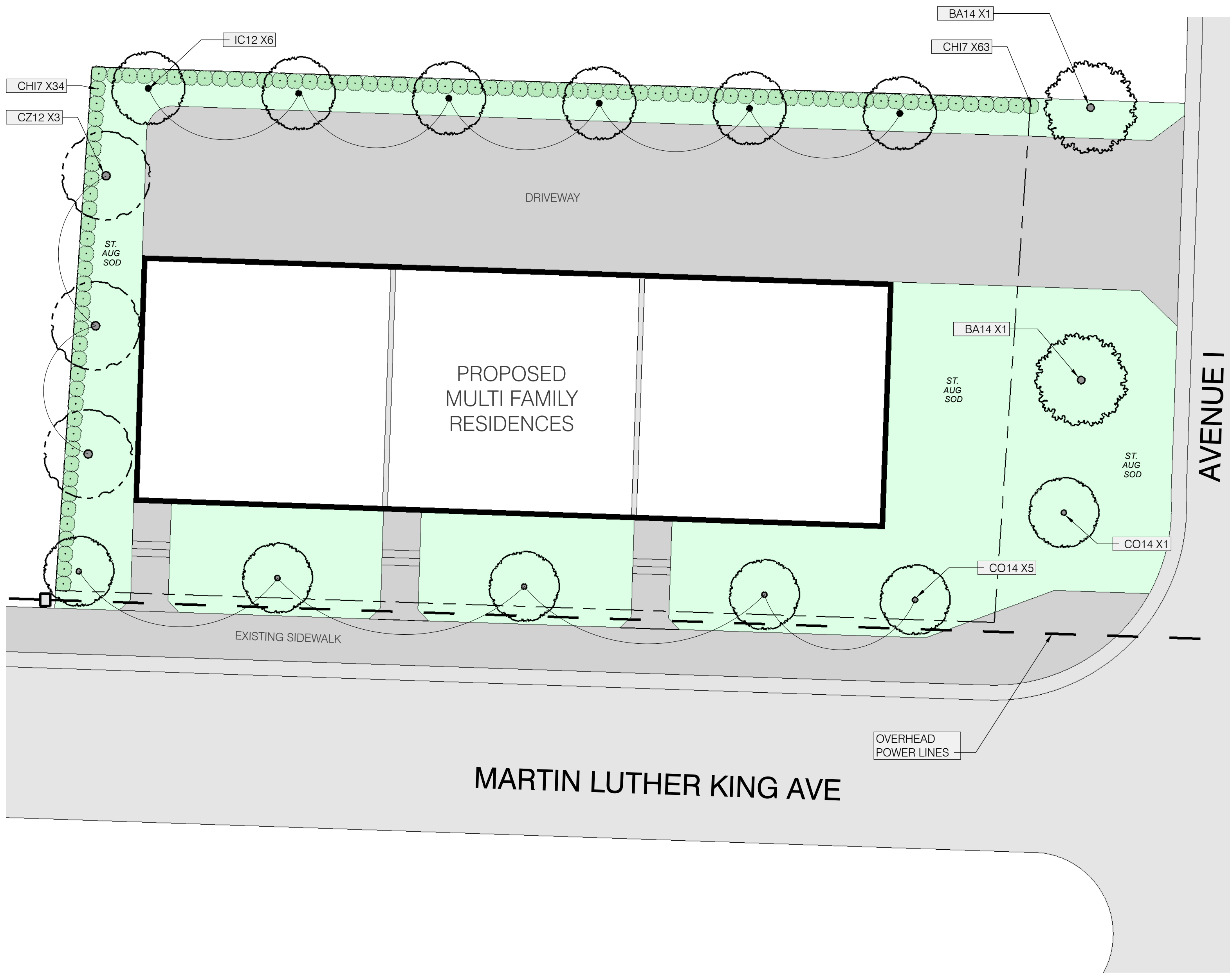


FOR PERMIT



SITE DATA

| | SFT | % |
|--------------------------|-------|-------|
| NET LOT AREA | 8,714 | |
| BUILDING SQ. FOOTAGE | 3,283 | 37.6% |
| NON BUILDING SQ. FOOTAGE | 5,431 | 62.3% |

LANDSCAPE MATERIALS SCHEDULE

| CODE SECTION | REQUIREMENT | REQUIRED | PROVIDED | NOTES |
|--------------------|---|----------|----------|-------|
| Section 31-609 (B) | One 12' OA. tree required for every 20 lft of required perimeter area | | | |
| | NORTH - 124' | 6 | 6 | |
| | WEST - 70' | 3 | 3 | |
| | A continuous hedge 3' in height along the perimeter landscape strip | | | |
| STREET TREES | One 14' OA tree required for every 25 lft of adjacent ROW space | | | |
| | SOUTH - 124' | 5 | 5 | |
| | EAST - 70' | 3 | 3 | |
| | NOTE: Overhead utilities prevent canopy trees to be planted | | | |

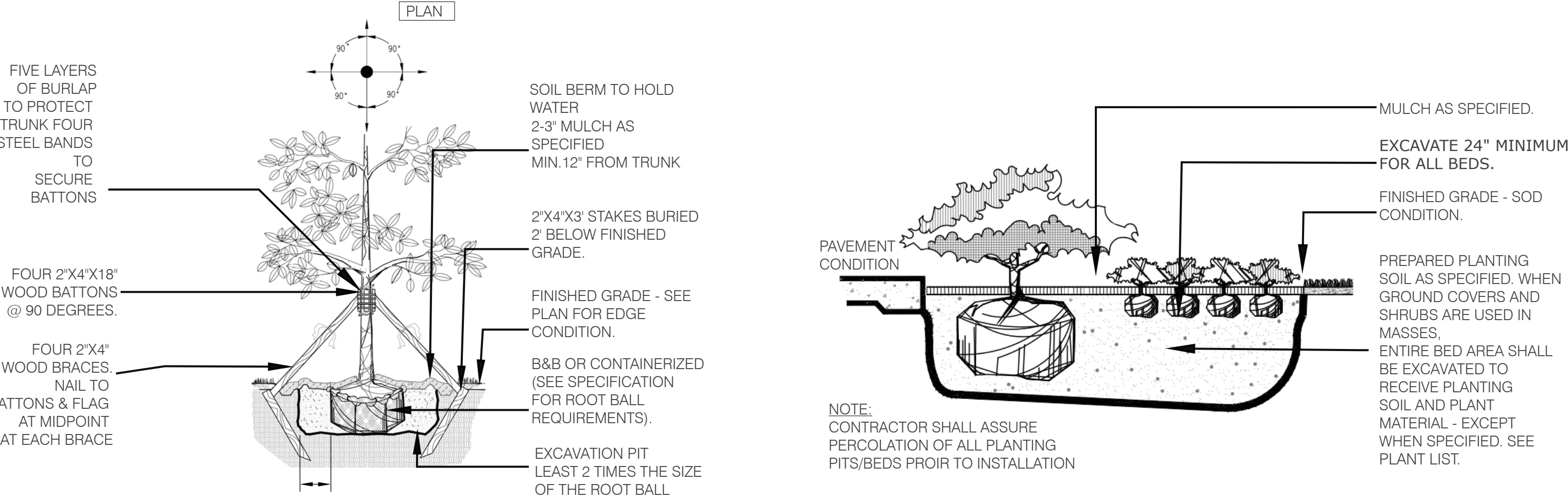
LANDSCAPE CODE REQUIREMENTS

| CODE | QTY | BOTANIC AND COMMON NAME | SPECIFICATION | NATIVE | NOTES |
|---------------|------|--|-----------------------------|--------|------------------|
| SHRUBS | | | | | |
| CH17 | 97 | Chrysobalanus icaco - Coco Plum | 3' OA. MIN. | NATIVE | DROUGHT TOLERANT |
| TREES | | | | | |
| CZ12 | 3 | Conucarpus erectus 'sericea' - Silver Buttonwood | 12' MIN. OA. CENTRAL LEADER | NATIVE | DROUGHT TOLERANT |
| CO14 | 6 | Cordia sebestenia - Geiger Tree | 14' MIN. OA. | NATIVE | DROUGHT TOLERANT |
| IC12 | 6 | Ilex cassine - East palaka Holly | 12' MIN. OA. CENTRAL LEADER | NATIVE | DROUGHT TOLERANT |
| BA14 | 2 | Bulnesia arborea - Vera Wood | 14' OA MIN. | | DROUGHT TOLERANT |
| MULCH | | | | | |
| | 500 | SFT | SHREDDED NON-CYPRESS MULCH | | *ESTIMATED QTY |
| SOD | | | | | |
| | 4200 | SFT | ST. AUGUSTINE FLORATAM | | *ESTIMATED QTY |

LANDSCAPE - GENERAL NOTES

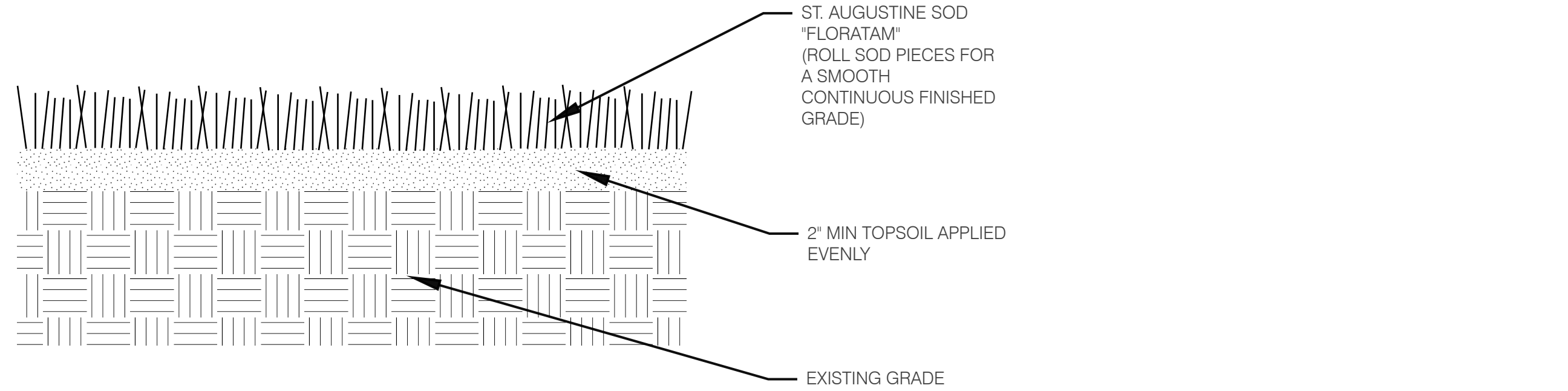
- The Contractor shall be responsible for verifying all underground utilities prior to digging in any area. The Contractor shall notify all necessary utility companies 48 hours minimum prior to digging for verification of all underground utilities, irrigation and all other obstructions and coordinate with Owner's Representative prior to initiating operations. Drawings are prepared according to the best information available at the time of preparing these documents.
- All plant material is to be Florida Number 1 or better according to the latest version of the Florida Department of Agriculture's Grades and Standards for Nursery Plants.
- Sod is to be grade 'A' weed free. All sodded areas are to be provided with St. Augustine "Floratom" solid sod. All sod is to be laid level, tight, and even along planting beds.

1 LANDSCAPE PLAN
L1.0



2 Large Tree (Typical)
L1.0 NTS

3 Shrub & Groundcover Planting Detail (Typical)
L1.0 NTS



4 Turf Grass Installation - St. Augustine
L1.0 NTS

| # | DATE | DESCRIPTION | REVISIONS |
|---|-----------|---------------|-----------|
| 1 | 8-30-2021 | FOR SUBMITTAL | |

AVENUE I
AVENUE I
Riviera Beach, FL
LANDSCAPE PLAN

DATE: 08/30/2021
SCALE: AS NOTED
DRAWN BY: TW
CHECKED BY: MRK
PROJECT #248A1

L1.0
LANDSCAPE PLAN
SHEET 1 of 1

GREENE GROUP
The use of these plans and specifications are restricted to the specific site for which they were prepared. Re-use, reproduction or publication by any method in whole or in part is prohibited, unless authorized by Greene Group. Ownership of the design, plans and specifications is solely with Greene Group.