

SITE TABULAR DATA

ADDRESS: AVENUE I,
RIVIERA BEACH, FL 33404

MUNICIPALITY: RIVIERA BEACH

ACREAGE: 0.20 ACRE(S)

USE CODE: 0000 - VACANT

ZONING: DR - DOWNTOWN RESIDENTIAL

LEGAL DESCRIPTION:
INLET CITY LTS 7 & 8 BLK 22

PARCEL CONTROL NO: 56-43-42-32-01-022-0070

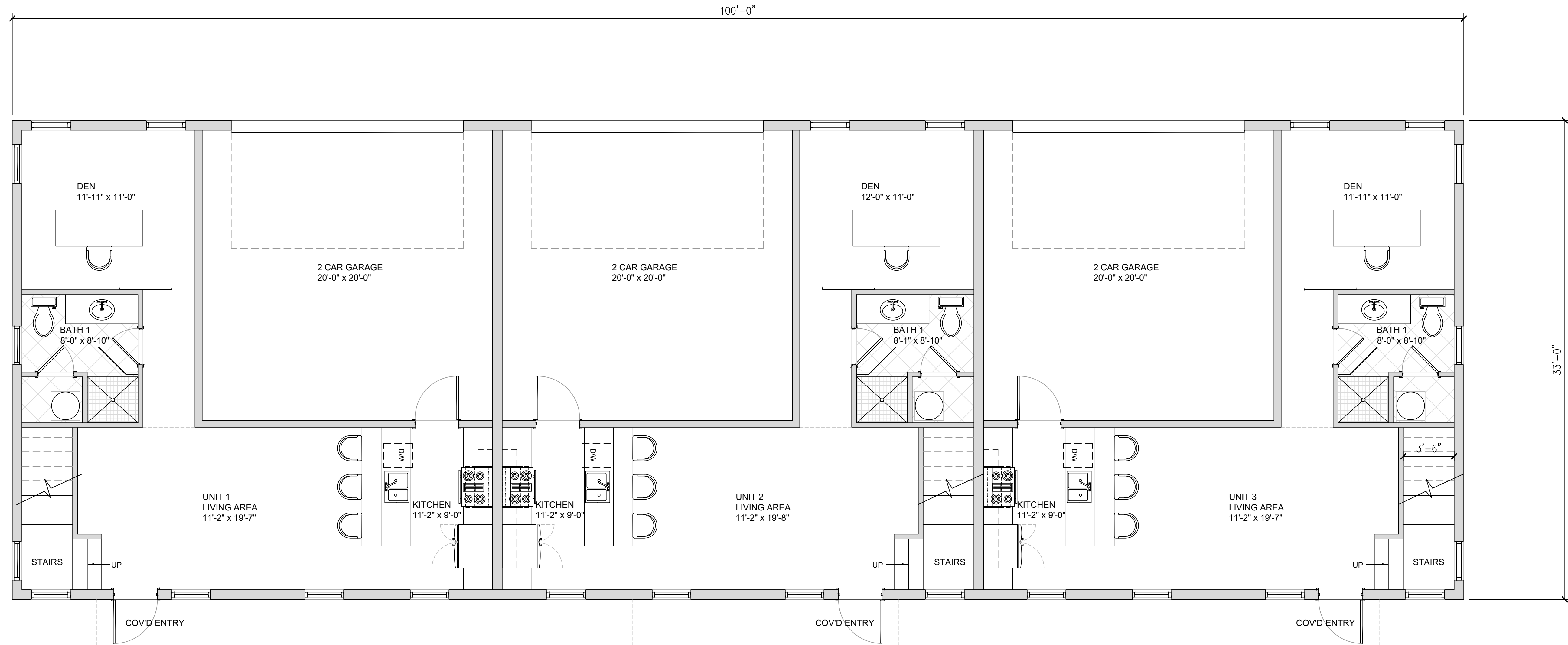
AREA CALCULATIONS

UNIT 1 1ST FLOOR: 1,102.7 gsf
UNIT 1 2ND FLOOR: 1,102.7 gsf
UNIT 1 TOTAL: 2,205.4 gsf

UNIT 2 1ST FLOOR: 1,094.5 gsf
UNIT 2 2ND FLOOR: 1,094.5 gsf
UNIT 2 TOTAL: 2,189.0 gsf

UNIT 3 1ST FLOOR: 1,102.7 gsf
UNIT 3 2ND FLOOR: 1,102.7 gsf
UNIT 3 TOTAL: 2,205.4 gsf

TOTAL SQUARE FOOTAGE: 6,600 gsf
TOTAL FOOTPRINT: 3,300 gsf



CONCEPTUAL LOWER LEVEL PLAN

SCALE: 1/4" = 1'-0"

ENGINEER OF RECORD:
DEREK SCHEINAVAR
PE #: 63858

NOT VALID FOR CONSTRUCTION UNLESS SIGNED AND SEALED BY THIS ENGINEER

#	DATE	DESCRIPTION	REVISIONS

SONSHINE BUILDERS GROUP, LLC.

PCN: 53-43-42-32-01-022-0070
RIVIERA BEACH, FL 33404

TRIPLEX CONCEPTUAL DESIGN

DATE: 11-15-2021
SCALE: AS NOTED
DRAWN BY: DF
CHECKED BY: DHS
PROJECT #: 21-02003.3

S-1

SHEET 1 OF 3