
Research Report

March 2007



106 N. Bronough St. ♦ P.O. Box 10209 ♦ Tallahassee, FL 32302 ♦ (850) 222-5052 ♦ FAX (850) 222-7476

This report was initially released electronically before being printed in hardcopy format

Process to Amend Local Government Charters Should Be Amended to Ensure Accountability, Integrity, and Transparency

Background

In November 2006, voters chose to strengthen Florida's constitution by requiring a 60% supermajority vote to approve future proposed amendments to the Florida Constitution, instead of the current simple majority. For 12 years, Florida TaxWatch had recommended a supermajority requirement as an essential check and balance to protect the long-term interests of Florida taxpayers. Our research found that this amendment will help to ensure that there is broad public support before changes are set in constitutional stone. It will also help maintain the Florida Constitution as the fundamental document that contains the root guidelines from which Florida should be governed, and make it more difficult for special interest groups to effectuate changes that benefit their narrowly defined priorities at the expense of the majority of voters and taxpayers.

A charter is the equivalent of the "constitution" of the local government and is similar to the articles of incorporation.¹ It defines and codifies the boundaries of the municipality, its form of government, the size of the council and certain governmental processes. In addition to all of Florida's 413 municipalities, 19 counties in Florida have a charter, which is required to be approved by its citizens through a referendum. Generally, if a subject area has not been prohibited or "preempted" by the Constitution or general law, a charter is presumed to be able to address such policy. Once approved, if a charter addresses a particular subject, that issue is settled law and cannot be changed (for example by variance or ordinance), without a vote by the electorate to remove that particular subject.

Most county charters identify selected subjects where municipal ordinances are permitted as long as the standards set are more stringent than that of the county ordinance.² Common areas of policy include planning and land use, environmental protection, and county infrastructure. A single, countywide vote of the electorate is required to amend the charter to authorize the county commission to adopt ordinances implementing countywide policy.

In addition, ordinances of the county commission in a non-charter county are not effective within a municipality to the extent of a conflict with the city's ordinance. However, county charters may specify which ordinance prevails in the event of a conflict in policy.

¹ In Florida, the Legislature approves the incorporation through a special act.

² The county charters of Alachua, Broward, Charlotte, Columbia, Hillsborough, Orange, Osceola, Palm Beach, Pinellas, Seminole and Volusia counties have such provisions.

Current Charter Amendment Process in Florida

In Florida, there are currently three primary methods to amend a local government charter. As required by Florida Statute, all local government charters can be amended by its legislative governing body, i.e. city commission by majority vote or through a citizen initiative through submission of a petition of registered voters to include an amendment on an election ballot.³ In addition, as shown in Appendix 1 (a 30-page spreadsheet available at www.FloridaTaxWatch.org), 54% of municipal charters authorize the formation of a Charter Review Commission.⁴ These commissions are composed of citizens who periodically meet to review the charter and submit recommended charter amendments for consideration by the governing body of the municipality.

When a municipal charter does not include specific provisions relating to amending its charter, state laws prevail.⁵ Section 166.031 *Florida Statutes* includes provisions for amending municipal charters through its governing body and by citizen initiative. Currently, under this law, any proposed amendment to a charter must be submitted to a vote of the electors at the next general election or at a special election called for such purpose. In addition, current state law specifies that petitions submitted via the citizen initiative process must be signed by 10 percent of the registered voters.⁶

Our review of the county and municipal charters in Florida found that almost two-thirds of the charters did not include provisions for amending its charter and were therefore subject to the provisions outlined in state law.

³ As specified in s. 166.031 *F.S.*

⁴ Section 125.61 *F.S.* authorized establishment of a Charter Review Commission through a resolution by the board of county commissioners or upon the submission of a petition to the county commission signed by at least 15 percent of the qualified electors of the county.

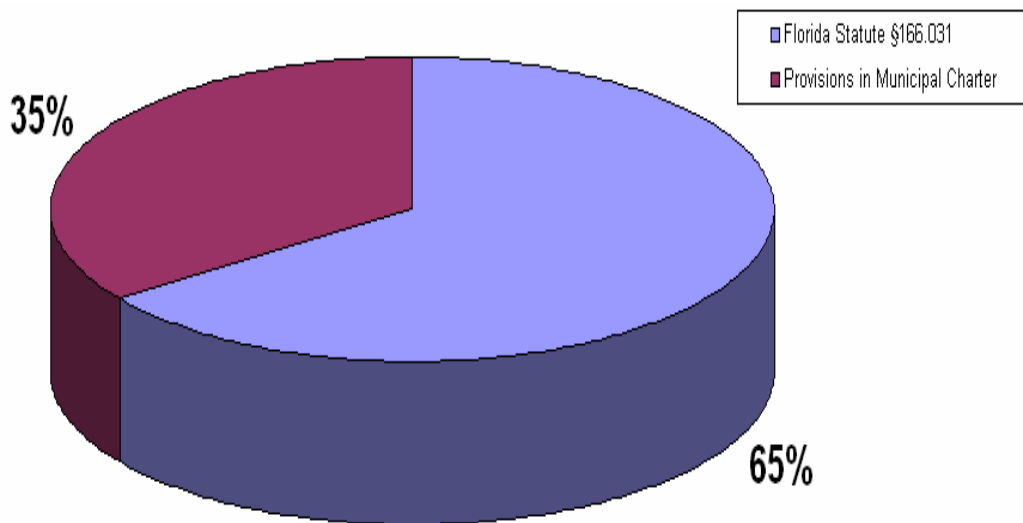
⁵ There are no specific requirements in Florida Statute regarding the process to amend county charters through the citizen initiative process.

⁶ Specifically, section 166.031 *F.S.* requires that the governing body of a municipality may, by ordinance, or the electors of a municipality may, by petition signed by 10 percent of the registered electors as of the last preceding municipal general election, submit to the electors of said municipality a proposed amendment to its charter, which amendment may be to any part or to all of said charter except that part describing the boundaries of such municipality. The governing body of the municipality shall place the proposed amendment contained in the ordinance or petition to a vote of the electors at the next general election held within the municipality or at a special election called for such purpose. Upon adoption of an amendment to the charter of a municipality by a majority of the electors voting in a referendum upon such amendment, the governing body of said municipality shall have the amendment incorporated into the charter and shall file the revised charter with the Department of State. All such amendments are effective on the date specified therein or as otherwise provided in the charter.

(3) A municipality may amend its charter pursuant to this section notwithstanding any charter provisions to the contrary. This section shall be supplemental to the provisions of all other laws relating to the amendment of municipal charters and is not intended to diminish any substantive or procedural power vested in any municipality by present law.

As shown in Exhibit 1, of the 352 municipal charters that we reviewed, 229, or 65%, did not include provisions that identified requirements to amend a charter through a citizen initiative.⁷ Consequently, the process to amend these charters is governed by the limited provisions in current state law.

Exhibit 1:
State Law Provides Only Requirements to Amend Most Municipal Charters



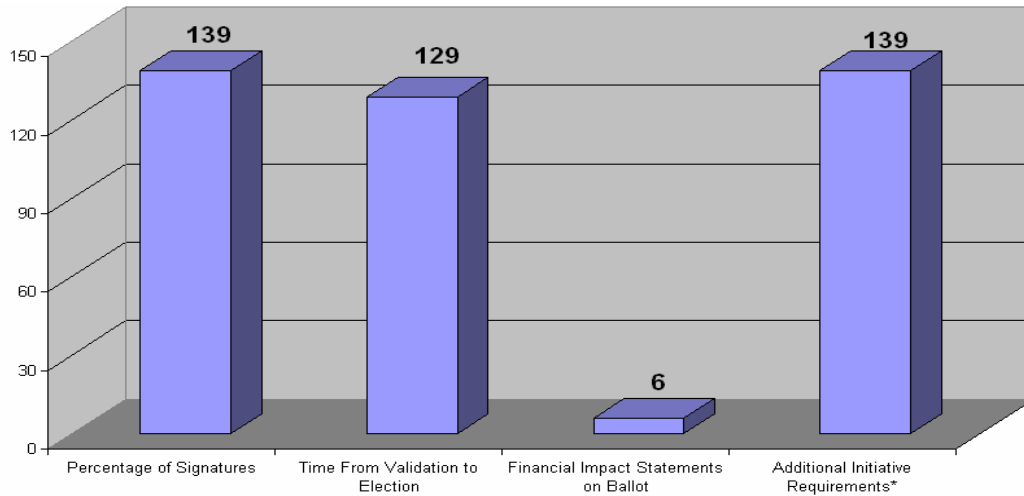
Source: Florida TaxWatch analysis of individual municipal charters.

Note: Florida TaxWatch reviewed 352 of 413 Municipal Charters, which govern over 99% of Florida’s population that reside in incorporated municipalities.

As shown in Exhibit 2, for those municipalities with charters containing provisions to amend the charter through a citizen initiative, additional requirements include those relating to the number of signatures, the distribution of those signatures throughout the county, the time between submission and election and the type of ballot information etc. Local government charters may have multiple amendment requirements.

⁷ We have determined that there are currently 413 incorporated municipalities in Florida with approved charters. The 352 municipal charters included in our analysis apply to over 99% of the citizens of Florida who live in incorporated municipalities.

Exhibit 2:
**Local Government Charters May Include Additional
 Charter Amendment Requirements**



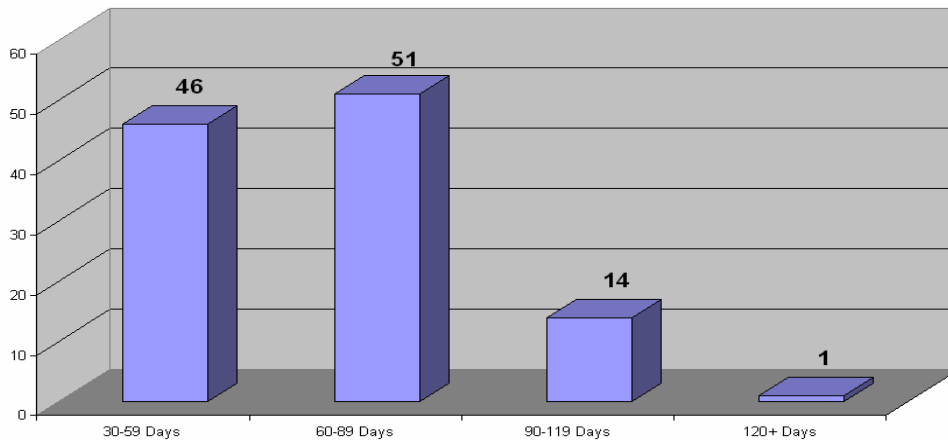
*Submission Date, Validation Official, Election Type, Notification Guidelines

Note: Some charters may be represented in multiple columns; 17 of the 129 charters in column 2 contain maximum time allotments, but no minimum specifications.

Source: Florida TaxWatch analysis of individual county and municipal charters.

For example, Exhibit 3 shows that 112 of the 371, or 30%, of the county and municipal charters reviewed specified minimum time periods between submission and verification of a charter amendment petition to the local government and the date of the corresponding election (See Attachment). Inclusion of a specified time period between submission and the election allows for each of the affected stakeholders to provide information to educate voters on the benefits and costs that would accrue if the charter amendment was adopted.

Exhibit 3:
**Only 112 of the 371 Local Government Charters Reviewed Have Minimum Time
 Requirements Between Petition Submission and Validation and the
 Corresponding Election to Adopt a Charter Amendment**



Source: Florida TaxWatch analysis of individual county and municipal charters.

Conclusion

These minimal requirements to amend county and municipal charters do little to ensure the accountability, transparency and integrity of the charter amendment process. As evidenced by recent initiatives to amend municipal charters and the process used in 1992 to adopt provisions of the ‘Homestead Valuation Limitation’ constitutional amendment, inadequate safeguards in the process to amend the state’s constitution or a local government charter may result in unintended consequences that produce egregious inequalities.

For example, the City of Lake Worth, Florida held an election to amend its charter by requiring approval of a super-majority of commissioners to make changes to its comprehensive plan. Had this charter amendment been approved by the voters, it would have placed additional restrictions on the ability to amend its comprehensive plan and would have undoubtedly had an adverse economic impact on its citizens and on government tax receipts. However, citizens have been provided less than ninety days between submission and validation of the proposed amendment and the corresponding election to educate themselves on this issue. In addition, no evaluation of the economic impact of this amendment is required to be included on the ballot.

The process to enact the constitutional amendment to limit the annual growth on assessments to homestead property also had inadequate safeguards. In 1992, Florida state law did not include a minimum time period between submission and approval of a petition to amend the constitution and the corresponding election. Consequently, the election to adopt this amendment occurred less than one week after court authorization of the ballot language. As a result, voters were not provided sufficient information to make an informed choice and passed an amendment that has produced a nine billion dollar transfer of the state’s tax burden to non-homesteaded properties, such as businesses, rentals and seasonal residences.

County and municipal charters are intended to serve as a strong foundation and outline of the general construct for a local government. Local government charters include provisions to protect the rights of its citizens, direct its government in the procedure of its duties, and assign and limit power. To adapt to the changing needs of the population it serves, a county or municipal charter must also be an organic document, allowing for thoughtful, deliberate revision—that is, with safeguards to ensure that any revision fulfills a need for change in the general procedural instructions and guidelines for its government. Amendments to local government charters are not intended to serve merely as a response to the passing political emotions of the moment or serve as a means to an end desired by a limited group.

Recommendations

County and municipal charters are, and rightly should be, an organic document. Fundamental changes in the structure of government must be allowed when necessary, but it is imperative that they be based on a broad and an informed decision by its citizens. To ensure the continued viability of representative government for Florida’s counties and municipalities, Florida TaxWatch recommends that Florida law be changed to strengthen the requirements associated with local government charter amendment process.

To improve the accountability, transparency and integrity of the process to amend local government charters, the minimum requirements to amend local government charters should be strengthened to more closely match the current requirements to amend Florida's constitution.⁸ Florida TaxWatch recommends that the Legislature amend Florida Statutes to include the following provisions:

- **A financial impact statement is included on the ballot** - Inclusion of a financial impact statement on the ballot would allow for voters to consider the estimated increase or decrease in any revenues or costs to local government resulting from the proposed amendment.
- **A time period between submission of the petition and the election is established** - To help ensure that both proponents and opponents of a proposed amendment are provided sufficient time to educate voters on the merits of their position, Florida TaxWatch recommends the Legislature establish a minimum time period of at least ninety days between submission and validation of a petition to amend a local government charter and the corresponding election.
- **Petition signature verification requirements conform to Section 99.097 F.S.** - Adoption of these verification requirements, which currently govern candidate petitions or state ballot initiatives, would help ensure that the costs associated with citizen initiatives to amend charters do not unduly burden the local government and its taxpayers.

⁸ As specified in Sections 99.097, 100.371 and 101.161 F.S.

This Florida TaxWatch *Research Report* was written by
Chuck Hefren, Senior Research Analyst,
with the assistance of
Ben Browning and Erich Howard, Graduate Student Interns, and Chris Letts, Student Intern,
Askew School of Public Administration and Policy, Florida State University,
and Deborrah Harris, Grants Director and Research Analyst
under the direction of John Turcotte, Senior Vice President for Research.

Michael A. Jennings, Chairman; Dominic M. Calabro, President, Publisher, and Editor;
Steve Evans, Chief Operating Officer

Florida TaxWatch Research Institute, Inc.
© Copyright Florida TaxWatch, March 2007

For a copy of this report or the appendix, please call:
(850) 222-5052

OR

Write to Florida TaxWatch at: P.O. Box 10209
Tallahassee, FL 32302

OR

Access and download the report at: www.FloridaTaxWatch.org, where this *Research Report* was initially released before being printed in hardcopy format.

About Florida TaxWatch

Florida TaxWatch is a statewide, non-profit, non-partisan taxpayer research institute and government watchdog that over its 28 year history has become widely recognized as the watchdog of citizens' hard-earned tax dollars. Its mission is to provide the citizens of Florida and public officials with high quality, independent research and education on government revenues, expenditures, taxation, public policies, and programs, and to increase the productivity and accountability of Florida Government.

Florida TaxWatch's research recommends productivity enhancements and explains the statewide impact of economic and tax and spend policies and practices on citizens and businesses. Florida TaxWatch has worked diligently and effectively to help state government shape responsible fiscal and public policy that adds value and benefit to taxpayers.

This diligence has yielded impressive results: in its first two decades alone, policymakers and government employees implemented three-fourths of Florida TaxWatch's cost-saving recommendations, saving the taxpayers of Florida more than \$6.2 billion -- approximately \$1,067 in added value for every Florida family, according to an independent assessment by Florida State University.

Florida TaxWatch has a historical understanding of state government, public policy issues, and the battles fought in the past necessary to structure effective solutions for today and the future. It is the only statewide organization devoted entirely to Florida taxing and spending issues. Its research and recommendations are reported on regularly by the statewide news media.

Supported by voluntary, tax-deductible memberships and grants, Florida TaxWatch is open to any organization or individual interested in helping to make Florida competitive, healthy and economically prosperous by supporting a credible research effort that promotes constructive taxpayer improvements. Members, through their loyal support, help Florida TaxWatch bring about a more effective, responsive government that is accountable to the citizens it serves.

Florida TaxWatch is supported by all types of taxpayers -- homeowners, small businesses, large corporations, philanthropic foundations, professionals, associations, labor organizations, retirees -- simply stated, the taxpayers of Florida. The officers, Board of Trustees and members of Florida TaxWatch are respected leaders and citizens from across Florida, committed to improving the health and prosperity of Florida.

With your help, Florida TaxWatch will continue its diligence to make certain your tax investments are fair and beneficial to you, the taxpaying customer, who supports Florida's government. Florida TaxWatch is ever present to ensure that taxes are equitable, not excessive, that their public benefits and costs are weighed, and government agencies are more responsive and productive in the use of your hard-earned tax dollars.

The Florida TaxWatch Board of Trustees is responsible for the general direction and oversight of the research institute and safeguarding the independence of the organization's work. In his capacity as chief executive officer, the president is responsible for formulating and coordinating policies, projects, publications, and selecting professional staff. As an independent research institute and taxpayer watchdog, Florida TaxWatch does not accept money from Florida state and local governments. The research findings and recommendations of Florida TaxWatch do not necessarily reflect the view of its members, staff, distinguished Board of Trustees, or Executive Committee, and are not influenced by the positions of the individuals or organizations who directly or indirectly support the research.

Florida TaxWatch Values:

◆ Integrity ◆ Productivity ◆ Accountability ◆ Independence ◆ Quality Research



www.floridatxwatch.org

106 N. Bronough Street
P.O. Box 10209
Tallahassee, FL 32302

NON-PROFIT ORG.

U.S. POSTAGE
PAID

TALLAHASSEE, FL
Permit No. 409

**APPENDIX 1:
Florida County and Municipal Charters**

County	Municipality	Population (2005)	Only Subject to §166.031	Percentage of Elector Signatures Required	Submission Date	Verification Official	Election Type	Time to Election	Economic Impact Requirements	Notification Guidelines	Withdrawal Guidelines
Escambia County 296,772											
	Century	1,799	Yes	See §166.031	N/A	N/A	N/A	N/A	—	N/A	N/A
	Pensacola	54,055	Yes	See §166.031	N/A	N/A	N/A	N/A	—	N/A	N/A
Unincorporated: 240,918 (81.2%)											
Santa Rosa County 143,105											
	Gulf Breeze	6,455	Yes	See §166.031	N/A	N/A	N/A	N/A	—	N/A	N/A
	Jay	665	Yes	See §166.031	N/A	N/A	N/A	N/A	—	N/A	N/A
	Milton	8,131	No	40%	None	City Clerk	General or Special	Between 60 and 120	NO	No Less than 30 Days Prior,	*
Unincorporated: 127,854 (89.3%)											
Okaloosa County 182,172											
	Cinco Bayou	384	Yes	See §166.031	N/A	N/A	N/A	N/A	—	N/A	N/A
	Crestview	17,707	Yes	See §166.031	N/A	N/A	N/A	N/A	—	N/A	N/A
	Destin	12,423	No	10%	None	City Manager	General or	No Less	NO	None	None
	Fort Walton Beach	19,817	Yes	See §166.031	N/A	N/A	N/A	N/A	—	N/A	N/A
	Laurel Hill	577	*	*	*	*	*	*	*	*	*
	Mary Esther	4,086	Yes	See §166.031	N/A	N/A	N/A	N/A	—	N/A	N/A
	Niceville	12,582	Yes	See §166.031	N/A	N/A	N/A	N/A	—	N/A	N/A
	Shalimar	733	Yes	See §166.031	N/A	N/A	N/A	N/A	—	N/A	N/A
	Valparaiso	6,365	Yes	See §166.031	N/A	N/A	N/A	N/A	—	N/A	N/A
Unincorporated: 107,498 (59.0%)											
Walton 50,324											
	Defuniak Springs	5,038	*	*	*	*	*	*	*	*	*
	Freeport	1,474	Yes	See §166.031	N/A	N/A	N/A	N/A	—	N/A	N/A
	Paxton	772	*	*	*	*	*	*	*	*	*
Unincorporated: 43,040 (85.5%)											

**APPENDIX 1:
Florida County and Municipal Charters**

County	Municipality	Population (2005)	Only Subject to §166.031	Percentage of Elector Signatures Required	Submission Date	Verification Official	Election Type	Time to Election	Economic Impact Requirements	Notification Guidelines	Withdrawal Guidelines
Holmes County		19,264									
	Bonifay	2,711	No	10%	None	City Clerk	Annual or Special	No Less than 60 Days Following	NO	None	None
	Esto	365	*	*	*	*	*	*	*	*	*
	Noma	218	*	*	*	*	*	*			
	Ponce De Leon	469	Yes	See §166.031	N/A	N/A	N/A	N/A	—	N/A	N/A
	Westville	229	*	*	*	*	*	*	*	*	*
	Unincorporated: 15,272 (79.3%)										
Washington County		22,299									
	Caryville	228	*	*	*	*	*	*	*	*	*
	Chipley	3,682	Yes	See §166.031	N/A	N/A	N/A	N/A	—	N/A	N/A
	Ebro	261	Yes	See §166.031	N/A	N/A	N/A	N/A	—	N/A	N/A
	Vernon	766	Yes	See §166.031	N/A	N/A	N/A	N/A	—	N/A	N/A
	Wasau	411	Yes	See §166.031	N/A	N/A	N/A	N/A	—	N/A	N/A
	Unincorporated: 16,951 (76.0%)										
Bay County		161,558									
	Callaway	14,437	Yes	See §166.031	N/A	N/A	N/A	N/A	—	N/A	N/A
	Cedar Grove	5,226	Yes	See §166.031	N/A	N/A	N/A	N/A	—	N/A	N/A
	Lynn Haven	15,677	Yes	See §166.031	N/A	N/A	N/A	N/A	—	N/A	N/A
	Mexico Beach	1,192	Yes	See §166.031	N/A	N/A	N/A	N/A	—	N/A	N/A
	Panama City	37,188	Yes	See §166.031	N/A	N/A	N/A	N/A	—	N/A	N/A
	Panama City Beach	11,477	Yes	See §166.031	N/A	N/A	N/A	N/A	—	N/A	N/A
	Parker	4,672	Yes	See §166.031	N/A	N/A	N/A	N/A	—	N/A	N/A
	Springfield	9,043	Yes	See §166.031	N/A	N/A	N/A	N/A	—	N/A	N/A
	Unincorporated: 18,887 (11.7%)										
Jackson County		48,985									
	Alford	472	*	*	*	*	*	*	*	*	*
	Bascom	107	*	*	*	*	*	*	*	*	*
	Campbellton	215	*	*	*	*	*	*	*	*	*
	Cottondale	879	Yes	See §166.031	N/A	N/A	N/A	N/A	—	N/A	N/A
	Graceville	2,423	*	*	*	*	*	*	*	*	*

**APPENDIX 1:
Florida County and Municipal Charters**

County	Municipality	Population (2005)	Only Subject to §166.031	Percentage of Elector Signatures Required	Submission Date	Verification Official	Election Type	Time to Election	Economic Impact Requirements	Notification Guidelines	Withdrawal Guidelines
	Grand Ridge	802	Yes	See §166.031	N/A	N/A	N/A	N/A	—	N/A	N/A
	Greenwood	747	Yes	See §166.031	N/A	N/A	N/A	N/A	—	N/A	N/A
	Jacob City	288	No	10%	None	"Designated	General or	No Less	NO	None	None
	Malone	2,012	Yes	See §166.031	N/A	N/A	N/A	N/A	—	N/A	N/A
	Marianna	6,275	No	10%	w/in 30 Days (Plus 10 Days)	City Clerk	General or Special	Between 30 and 60 Days Following Validation	NO	None	Prior to 15th Day Preceding Vote
	Sneads	1,943	Yes	See §166.031	N/A	N/A	N/A	N/A	—	N/A	N/A
Unincorporated: 32,822 (67%)											
Calhoun County		13,290									
	Altha	511	Yes	See §166.031	N/A	N/A	N/A	N/A	—	N/A	N/A
	Blountstown	2,433	*	*	*	*	*	*	*	*	*
Unincorporated: 10,346 (77.8%)											
Gulf County		13,975									
	Port St. Joe	3,602	Yes	See §166.031	N/A	N/A	N/A	N/A	—	N/A	N/A
	Wewahitchka	1,691	*	*	*	*	*	*	*	*	*
Unincorporated: 8,682 (62.9%)											
Gadsden County		46,428									
	Chattahoochee	3,720	No	10%	None	Designated	General or	No Less	NO	None	None
	Greensboro	615	*	*	*	*	*	*	*	*	*
	Gretna	1,699	*	*	*	*	*	*	*	*	*
	Havana	1,701	Yes	See §166.031	N/A	N/A	N/A	N/A	—	N/A	N/A
	Midway	1,585	Yes	See §166.031	N/A	N/A	N/A	N/A	—	N/A	N/A
	Quincy	6,993	Yes	See §166.031	N/A	N/A	N/A	N/A	—	N/A	N/A
Unincorporated: 30,115 (64.9%)											
Liberty		7,773									
	Bristol	910	Yes	See §166.031	N/A	N/A	N/A	N/A	—	N/A	N/A
Unincorporated: 6,863 (88.3%)											
Franklin County		10,177									
	Apalachicola	2,340	*	*	*	*	*	*	*	*	*
	Carrabelle	1,290	*	*	*	*	*	*	*	*	*
Unincorporated: 6,547 (64.3%)											

**APPENDIX 1:
Florida County and Municipal Charters**

County	Municipality	Population (2005)	Only Subject to §166.031	Percentage of Elector Signatures Required	Submission Date	Verification Official	Election Type	Time to Election	Economic Impact Requirements	Notification Guidelines	Withdrawal Guidelines
								No Less than 90 Days Following	NO	Published w/in 14 Days Following Validation	None
Leon County		245,756	No	10%	1 Year (Update Quaterly) (Plus 30 Days)	Supervisor of Elections	General				
	Tallahassee	158,500	Yes	See §166.031	N/A	N/A	N/A	N/A	—	N/A	N/A
Unincorporated: 87,256 (35.5%)											
Wakulla County		28,212									
	Sopchoppy	475	Yes	See §166.031	N/A	N/A	N/A	N/A	—	N/A	N/A
	St. Marks	305	Yes	See §166.031	N/A	N/A	N/A	N/A	—	N/A	N/A
Unincorporated: 27,432 (97.2%)											
Jefferson County		14,490									
	Monticello	2,546	Yes	See §166.031	N/A	N/A	N/A	N/A	—	N/A	N/A
Unincorporated: 11,944 (82.4%)											
Madison County		19,092									
	Greenville	829	*	*	*	*	*	*	*	*	*
	Lee	360	Yes	See §166.031	N/A	N/A	N/A	N/A	—	N/A	N/A
	Madison	3,190	*	*	*	*	*	*	*	*	*
Unincorporated: 14,713 (77.1%)											
Taylor		19,622									
	Perry	6,734	Yes	See §166.031	N/A	N/A	N/A	N/A	—	N/A	N/A
Unincorporated: 12,888 (65.7%)											
Hamilton County		13,983									
	Jasper	1,817	*	*	*	*	*	*	*	*	*
	Jennings	830	*	*	*	*	*	*	*	*	*
	White Springs	815	No	10%	w/in 90 Days (Plus 10 Days)	Town Clerk	General or Special	Between 30 Days and 1Yr. Following Validation	NO	At Least 1 Newspaper, At Least 30 Days Prior to Election	Prior to 15th Day Preceding Vote

**APPENDIX 1:
Florida County and Municipal Charters**

County	Municipality	Population (2005)	Only Subject to §166.031	Percentage of Elector Signatures Required	Submission Date	Verification Official	Election Type	Time to Election	Economic Impact Requirements	Notification Guidelines	Withdrawal Guidelines
Unincorporated: 10,521 (75.2%)											
Suwannee County 38,624											
	Branford	756	Yes	See §166.031	N/A	N/A	N/A	N/A	—	N/A	N/A
	Live Oak	6,922	Yes	See §166.031	N/A	N/A	N/A	N/A	—	N/A	N/A
Unincorporated: 30,946 (80.1%)											
Lafayette County 7,953											
	Mayo	1,032	Yes	See §166.031	N/A	N/A	N/A	N/A	—	N/A	N/A
Unincorporated: 6,921 (87.0%)											
Dixie County 14,647											
	Cross City	1,808	Yes	See §166.031	N/A	N/A	N/A	N/A	—	N/A	N/A
	Horseshoe Beach	243	*	*	*	*	*	*	*	*	*
Unincorporated: 12,596 (86.0%)											
										At Least Twice, Intervals at Least 7 Days, Between 5 and 30 Days of	None
Columbia County		64,040	No	10% in At Least 3/5 of Dist.	6 Months (Update Quarterly) (Plus 30 Days)	Supervisor of Elections	General or Special	w/in 60 Days Following Validation	NO		
	Fort White	454	*	*	*	*	*	*	*	*	*
	Lake City	10,970	Yes	See §166.031	N/A	N/A	N/A	N/A	—	N/A	N/A
Unincorporated: 52,616 (82.2%)											
Gilchrist County 16,402											
	Bell	390	*	*	*	*	*	*	*	*	*
	Fanning Springs (partial)	311	*	*	*	*	*	*	*	*	*
	Trenton	1,793	Yes	See §166.031	N/A	N/A	N/A	N/A	—	N/A	N/A
Unincorporated: 13,908 (84.8%)											

**APPENDIX 1:
Florida County and Municipal Charters**

County Union	Municipality	Population (2005)	Only Subject to §166.031	Percentage of Elector Signatures Required	Submission Date	Verification Official	Election Type	Time to Election	Economic Impact Requirements	Notification Guidelines	Withdrawal Guidelines
		14,916									
	Lake Butler	1,967	*	*	*	*	*	*	*	*	*
	Raiford	191	*	*	*	*	*	*	*	*	*
	Worthington Springs	197	*	*	*	*	*	*	*	*	*
		Unincorporated: 12,561 (84.2%)									
Bradford County		28,118									
	Brooker	366	Yes	See §166.031	N/A	N/A	N/A	N/A	—	N/A	N/A
	Hampton	448	*	*	*	*	*	*	*	*	*
	Lawtey	684	Yes	See §166.031	N/A	N/A	N/A	N/A	—	N/A	N/A
	Starke	5,844	Yes	See §166.031	N/A	N/A	N/A	N/A	—	N/A	N/A
		Unincorporated: 20,776 (73.9%)									
Alachua County		223,852	No	10%	180 Days	Supervisor of Elections	General	No Less than 90 Days Following	NO	None	None
	Alachua City	7,557	No	10%	None	"Designated Official"	General or Special	No Less than 60 Days Following	NO	None	None
	Archer	1,288	Yes	See §166.031	N/A	N/A	N/A	N/A	—	N/A	N/A
	Gainesville	108,184	No	10%	None	Commission	General or Special	None	NO	At Least Once per Wk. for 4 Consecutive Wks. Prior to Election	None
	Hawthorne	1,443	No	10%	None	Commission	General or Special	Between 60 and 120 Days Following Validation	NO	At Least 1 Newspaper; At least 10 Days Prior to Adoption	At Least 10% of Voters
	High Springs	4,157	Yes	See §166.031	N/A	N/A	N/A	N/A	—	N/A	N/A
	La Crosse	155	*	*	*	*	*	*	*	*	*
	Micanopy	652	*	*	*	*	*	*	*	*	*
	Newberry	3,804	No	25%	w/in 60 Days	City Clerk	General or Special	Between 30 and 60 Days	NO	Between 30 and 60 Days	None
	Waldo	776	Yes	See §166.031	N/A	N/A	N/A	N/A	—	N/A	N/A

**APPENDIX 1:
Florida County and Municipal Charters**

County	Municipality	Population (2005)	Only Subject to §166.031	Percentage of Elector Signatures Required	Submission Date	Verification Official	Election Type	Time to Election	Economic Impact Requirements	Notification Guidelines	Withdrawal Guidelines
Unincorporated: 95,836 (42.8%)											
Baker		24,569									
	Glen St. Mary	496	*	*	*	*	*	*	*	*	*
	Macclenny	5186	Yes	See §166.031	N/A	N/A	N/A	N/A	—	N/A	N/A
Unincorporated: 18,887 (76.9%)											
Nassau County		64,746									
	Callahan	951	Yes	See §166.031	N/A	N/A	N/A	N/A	—	N/A	N/A
	Fernandina Beach	11,264	Yes	See §166.031	N/A	N/A	N/A	N/A	—	N/A	N/A
	Hilliard	2,913	No	20%	60 Days	Town Clerk	General or Special	Between 60 and 120 Days Following Validation	NO	At Least 1 Newspaper; At Least 30 Days Prior to Election	Prior to 15th Day Preceding Vote
Unincorporated: 49,618 (76.6%)											
Duval		826,436	Jacksonville	5% (10%)	180 Days	Supervisor of	General	No Less	YES	At Least	None
	Atlantic Beach	13,436	County Charter	5% (10%)	180 Days	Supervisor of	General	No Less	YES	At Least	None
	Baldwin	1,589	County Charter	5% (10%)	180 Days	Supervisor of	General	No Less	YES	At Least	None
	Jacksonville	782,623	County Charter	5% (10%)	180 Days	Supervisor of	General	No Less	YES	At Least	None
	Jacksonville	21,770	County Charter	5% (10%)	180 Days	Supervisor of	General	No Less	YES	At Least	None
	Neptune Beach	7,018	County Charter	5% (10%)	180 Days	Supervisor of	General	No Less	YES	At Least	None
Unincorporated: None (0%)											
Clay County		171,095	No	10%	180 Days	Supervisor of Elections	General	No Less than 90 Days Following	NO	None	None
	Green Cove Springs	6,085	Yes	See §166.031	N/A	N/A	N/A	N/A	—	N/A	N/A
	Keystone Heights	1,427	Yes	See §166.031	N/A	N/A	N/A	N/A	—	N/A	N/A
	Orange Park	9,205	Yes	See §166.031	N/A	N/A	N/A	N/A	—	N/A	N/A
	Penney Farms	613	Yes	See §166.031	N/A	N/A	N/A	N/A	—	N/A	N/A
Unincorporated: 153,765 (89.9%)											

**APPENDIX 1:
Florida County and Municipal Charters**

County	Municipality	Population (2005)	Only Subject to §166.031	Percentage of Elector Signatures Required	Submission Date	Verification Official	Election Type	Time to Election	Economic Impact Requirements	Notification Guidelines	Withdrawal Guidelines
St. Johns County		161,525									
	Hastings	631	Yes	See §166.031	N/A	N/A	N/A	N/A	—	N/A	N/A
	Marineland (partial)	1	Yes	See §166.031	N/A	N/A	N/A	N/A	—	N/A	N/A
	St. Augustine	12,263	No	35%	None	City Commission	General or Special	Between 60 and 120 Days Following	NO	None	None
	St. Augustine Beach	5,753	Yes	See §166.031	N/A	N/A	N/A	N/A	—	N/A	N/A
Unincorporated: 142,877 (88.5%)											
Putnam County		73,568									
	Crescent City	1,817	No	10%	None	None	Special or General	Special--W/in 60	NO	None	None
	Interlachen	1,518	Yes	See §166.031	N/A	N/A	N/A	N/A	—	N/A	N/A
	Palatka	1,518	Yes	See §166.031	N/A	N/A	N/A	N/A	—	N/A	N/A
	Pomona Park	809	*	*	*	*	*	*	*	*	*
	Welaka	615	*	*	*	*	*	*	*	*	*
Unincorporated: 57,867 (78.7%)											
Flagler County		76,410									
	Beverly Beach	325	Yes	See §166.031	N/A	N/A	N/A	N/A	—	N/A	N/A
	Bunnell	1,479	Yes	See §166.031	N/A	N/A	N/A	N/A	—	N/A	N/A
	Flagler Beach (partial)	3,100	No	15%	None	City Clerk	General or Special	Between 30 Days and 1 Yr. Following Validation	NO	At Least 1 Newspaper; At Least 30 Days Prior to Election	Prior to 15th Day Preceding Vote
	Marineland (partial)	6	Yes	See §166.031	N/A	N/A	N/A	N/A	—	N/A	N/A
	Palm Coast	60,952	No	25%	None	None	General	None	NO	None	None
Unincorporated: 10,584 (13.9%)											
Levy County		37,998									
	Bronson	1,041	Yes	See §166.031	N/A	N/A	N/A	N/A	—	N/A	N/A

**APPENDIX 1:
Florida County and Municipal Charters**

County	Municipality	Population (2005)	Only Subject to §166.031	Percentage of Elector Signatures Required	Submission Date	Verification Official	Election Type	Time to Election	Economic Impact Requirements	Notification Guidelines	Withdrawal Guidelines
	Cedar Key	958	No	20%	None	None	General or Special	None	NO	At Least Once per Wk. for 4 Consecutive Wks. Prior to Election	None
	Chiefland	2,095	Yes	See §166.031	N/A	N/A	N/A	N/A	—	N/A	N/A
	Fanning Springs (partial)	501	*	*	*	*	*	*	*	*	*
	Inglis	1,611	Yes	See §166.031	N/A	N/A	N/A	N/A	—	N/A	N/A
	Otter Creek	129	Yes	See §166.031	N/A	N/A	N/A	N/A	—	N/A	N/A
	Williston	2,508	Yes	See §166.031	N/A	N/A	N/A	N/A	—	N/A	N/A
	Yankeetown	678	Yes	See §166.031	N/A	N/A	N/A	N/A	—	N/A	N/A
Unincorporated: 28,477 (74.9%)											
Citrus	134,370										
	Crystal River	3,600	Yes	See §166.031	N/A	N/A	N/A	N/A	—	N/A	N/A
	Inverness	7,295	Yes	See §166.031	N/A	N/A	N/A	N/A	—	N/A	N/A
Unincorporated: 123,475 (91.9%)											
Hernando County	158,409										
	Brooksville	7,637	No	10%	None	"Designated Official"	General or Special	No Less than 60 Days Following	NO	None	None
	Weeki Wachee	12	*	*	*	*	*	*	*	*	*
Unincorporated: 150,760 (95.2%)											
Marion	303,442										
	Belleview	3,856	No	10%	w/in 30 Days (Plus 30 Days)	City Council	General or Special	Between 30 and 60 Days Following Validation	NO	At Least 1 Newspaper; 10 Days Prior to Election	None
	Dunnellon	1,971	Yes	See §166.031	N/A	N/A	N/A	N/A	—	N/A	N/A
	McIntosh	501	No	15%	w/in 90 Days (Plus 15 Days)	Town Clerk	General or Special	Between 45 and 180 Days Following	NO	At Least Once by Title; Only 10 Days Prior to Election	Chairperson + Majority of Committee
	Ocala	49,745	Yes	See §166.031	N/A	N/A	N/A	N/A	—	N/A	N/A

**APPENDIX 1:
Florida County and Municipal Charters**

County	Municipality	Population (2005)	Only Subject to §166.031	Percentage of Elector Signatures Required	Submission Date	Verification Official	Election Type	Time to Election	Economic Impact Requirements	Notification Guidelines	Withdrawal Guidelines
	Reddick	640	*	*	*	*	*	*	*	*	*
Unincorporated: 246,729 (81.3%)											
Sumter County		64,182									
	Bushnell	2,119	*	*	*	*	*	*	*	*	*
	Center Hill	958	*	*	*	*	*	*	*	*	*
	Coleman	679	Yes	See §166.031	N/A	N/A	N/A	N/A	—	N/A	N/A
	Webster	838	*	*	*	*	*	*	*	*	*
	Wildwood	3,428	Yes	See §166.031	N/A	N/A	N/A	N/A	—	N/A	N/A
Unincorporated: 56,160 (87.5%)											
Lake County		277,035									
	Astatula	1,629	Yes	See §166.031	N/A	N/A	N/A	N/A	—	N/A	N/A
	Clermont	11,617	Yes	See §166.031	N/A	N/A	N/A	N/A	—	N/A	N/A
	Eustis	17,683	Yes	See §166.031	N/A	N/A	N/A	N/A	—	N/A	N/A
	Fruitland Park	3,578	No	10%	None	Clerk/County	Special	than 60	NO	None	None
	Groveland	5,205	Yes	See §166.031	N/A	N/A	N/A	N/A	—	N/A	N/A
	Howey-In-The-Hills	1,194	Yes	See §166.031	N/A	N/A	N/A	N/A	—	N/A	N/A
	Lady Lake	13,244	Yes	See §166.031	N/A	N/A	N/A	N/A	—	N/A	N/A
	Leesburg	19,086	Yes	See §166.031	N/A	N/A	N/A	N/A	—	N/A	N/A
	Mascotte	4,647	Yes	See §166.031	N/A	N/A	N/A	N/A	—	N/A	N/A
	Minneola	8,665	No	15%	None	County	None	No Less	NO	None	None
	Monteverde	956	*	*	*	*	*	*	*	*	*
	Mount Dora	11,474	Yes	See §166.031	N/A	N/A	N/A	N/A	—	N/A	N/A
	Tavares	11,621	No	15%	30 Days (Plus 10 Days)	City Council	None	w/in 60 Days Following Validation	NO	None	Prior to 15th Day Preceding Vote
	Umatilla	2,647	Yes	See §166.031	N/A	N/A	N/A	N/A	—	N/A	N/A
Unincorporated: 163,789 (59.1%)											
Volusia County		490,055	No	5% from Each Council District	180 Days	County Manager	General	None	NO	Twice at Least 30 Days Prior to	None
	Daytona Beach	64,421	Yes	See §166.031	N/A	N/A	N/A	N/A	—	N/A	N/A

**APPENDIX 1:
Florida County and Municipal Charters**

County	Municipality	Population (2005)	Only Subject to §166.031	Percentage of Elector Signatures Required	Submission Date	Verification Official	Election Type	Time to Election	Economic Impact Requirements	Notification Guidelines	Withdrawal Guidelines
	Daytona Beach Shores	4,817	No	10%	None	None	Special or General	Special-w/in 60 Days Following Validation; General-w/in 90 Days Following Validation	NO	None	None
	Debary	16,413	Yes	See §166.031	N/A	N/A	N/A	N/A	—	N/A	N/A
	Deland	24,375	Yes	See §166.031	N/A	N/A	N/A	N/A	—	N/A	N/A
	Deltona	82,788	No	25%	None	City Commission	None	None	NO	None	None
	Edgewater	21,132	Yes	See §166.031	N/A	N/A	N/A	N/A	—	N/A	N/A
	Flagler Beach (partial)	79	No	15%	None	City Clerk	General or Special	Between 30 Days and 1 Yr. Following Validation	NO	1 Newspaper; At Least 30 Days Prior to Election	Prior to 15th Day Preceding Vote
	Holly Hill	12,630	Yes	See §166.031	N/A	N/A	N/A	N/A	—	N/A	N/A
	Lake Helen	2,816	*	*	*	*	*	*	*	*	*
	New Smyrna Beach	22,356	No	20%	w/in 60 Days	City Clerk/County Supervisor of Elections	Referendum	First Tuesday after First Monday in November, Each Odd	NO	None	None
	Oak Hill	1,484	Yes	See §166.031	N/A	N/A	N/A	N/A	—	N/A	N/A
	Orange City	7,862	Yes	See §166.031	N/A	N/A	N/A	N/A	—	N/A	N/A
	Ormond Beach	38,613	Yes	See §166.031	N/A	N/A	N/A	N/A	—	N/A	N/A
	Pierson	2,604	*	*	*	*	*	*	*	*	*
	Ponce Inlet	3,202	Yes	See §166.031	N/A	N/A	N/A	N/A	—	N/A	N/A
	Port Orange	53,746	Yes	See §166.031	N/A	N/A	N/A	N/A	—	N/A	N/A
	South Daytona	13,733	Yes	See §166.031	N/A	N/A	N/A	N/A	—	N/A	N/A
Unincorporated: 116,984 (23.9%)											
Seminole County		401,619	No	7.5% Residing in 3/5 of Districts	6 Months	Supervisor of Elections	General	No Less than 90 Days following	NO	None	None

**APPENDIX 1:
Florida County and Municipal Charters**

County	Municipality	Population (2005)	Only Subject to §166.031	Percentage of Elector Signatures Required	Submission Date	Verification Official	Election Type	Time to Election	Economic Impact Requirements	Notification Guidelines	Withdrawal Guidelines
	Altamonte Springs	41,057	No	10%	None	"Designated Official"	General or Special	Between 60 and 120 Days Following	NO	None	None
	Casselberry	24,298	No	25%	None	City Clerk/County Supervisor of Elections	Next Regular Municipal Election	None	NO	None	None
	Lake Mary	14,638	Yes	See §166.031	N/A	N/A	N/A	N/A	—	N/A	N/A
	Longwood	13,580	Yes	See §166.031	N/A	N/A	N/A	N/A	—	N/A	N/A
	Oviedo	29,848	Yes	See §166.031	N/A	N/A	N/A	N/A	—	N/A	N/A
	Sanford	47,257	No	20%	None	City Clerk	General or Special	Between 60 and 120 Days Following Validation	NO	At Least 1 Newspaper; At Least 30 Days Prior to Election	Prior to 15th Day Preceding Vote
	Winter Springs	32,583	No	10%	w/in 30Days	City Clerk	General or	No Less	NO	None	Any Time By
Unincorporated: 198,358 (49.4%)											
Orange County		1,023,023	No	10%	180 Days	Supervisor of Elections	General, Special, Primary	After 45 Days Following Commission	NO	None	None
	Apopka	34,728	Yes	See §166.031	N/A	N/A	N/A	N/A	—	N/A	N/A
	Bay Lake	22	Yes	See §166.031	N/A	N/A	N/A	N/A	—	N/A	N/A
	Belle Isle	6,431	No	10%	None	"Designated Official"	General or Special	No Less than 60 Days Following	NO	None	None
	Eatonville	2,390	*	*	*	*	*	*	*	*	*
	Edgewood	2,098	No	10%	None	"Designated Official"	General or Special	No Less than 60 Days Following	NO	None	None
	Lake Buena Vista	16	Yes	See §166.031	N/A	N/A	N/A	N/A	—	N/A	N/A
	Maitland	14,125	No	10%	None	City Clerk	General or Special	Between 60 and 120 Days Following	NO	At Least 1 Newspaper; 30 Days Prior to Election	Prior to 15th Day Preceding Vote
	Oakland	1,093	Yes	See §166.031	N/A	N/A	N/A	N/A	—	N/A	N/A
	Ocoee	29,849	Yes	See §166.031	N/A	N/A	N/A	N/A	—	N/A	N/A

**APPENDIX 1:
Florida County and Municipal Charters**

County	Municipality	Population (2005)	Only Subject to §166.031	Percentage of Elector Signatures Required	Submission Date	Verification Official	Election Type	Time to Election	Economic Impact Requirements	Notification Guidelines	Withdrawal Guidelines
	Orlando	213,223	Yes	See §166.031	N/A	N/A	N/A	N/A	—	N/A	N/A
	Windermere	2,003	Yes	See §166.031	N/A	N/A	N/A	N/A	—	N/A	N/A
	Winter Garden	25,500	Yes	See §166.031	N/A	N/A	N/A	N/A	—	N/A	N/A
	Winter Park	28,179	No	10%	None	City Clerk	General or Special	Between 30 and 60 Days Following Validation	NO	None	None
Unincorporated: 663,366 (64.8%)											
Osceola County		231,578	No	10%	180 Days	Supervisor of Elections	Special	No Less Than 90 Days Following	NO	None	None
	Kissimmee	59,364	Yes	See §166.031	N/A	N/A	N/A	N/A	—	N/A	N/A
	St. Cloud	22,508	Yes	See §166.031	N/A	N/A	N/A	N/A	—	N/A	N/A
Unincorporated: 149,706 (64.6%)											
Brevard County		531,250	No	4% (1% Each District After Validation)	9 Months (Plus 30 Days)	Supervisor of Elections	Special	w/in 45 days or Next Countywide Election	NO	1 Time per Wk, 4 Wks, No More than 45 Days Before Referendum	None
	Cape Canaveral (Port Canaveral)	10,523	Yes	See §166.031	N/A	N/A	N/A	N/A	—	N/A	N/A
	Cocoa	16,898	Yes	See §166.031	N/A	N/A	N/A	N/A	—	N/A	N/A
	Cocoa Beach	12,435	No	10%	(Plus 10 Days)	City Clerk	General or Special	No More than 120 Days Following	NO	None	None
	Grant-Valkaria	*	No	20%	None	None	General or Special	Next General; Unless Specified Special Date	NO	Twice, Between 30 and 60 Days Prior to Election	None
	Indialantic	3,076	Yes	See §166.031	N/A	N/A	N/A	N/A	—	N/A	N/A
	Indian Harbour Beach	8,441	Yes	See §166.031	N/A	N/A	N/A	N/A	—	N/A	N/A
	Malabar	2,772	Yes	See §166.031	N/A	N/A	N/A	N/A	—	N/A	N/A

**APPENDIX 1:
Florida County and Municipal Charters**

County	Municipality	Population (2005)	Only Subject to §166.031	Percentage of Elector Signatures Required	Submission Date	Verification Official	Election Type	Time to Election	Economic Impact Requirements	Notification Guidelines	Withdrawal Guidelines
	Melbourne	76,646	Yes	See §166.031	N/A	N/A	N/A	N/A	—	N/A	N/A
	Melbourne Beach	3,314	Yes	See §166.031	N/A	N/A	N/A	N/A	—	N/A	N/A
	Melbourne Village	702	*	*	*	*	*	*	*	*	*
	Palm Bay	92,833	No	10%	Between 45-90 Days Prior to Election (Plus 10 Days)	City Clerk	General or Special	Special-Between 60 and 120 Days Following Validation; General-Between 45 and 120 Days	NO	1 in 5th Week Prior to Election and 1 in 3rd Week Prior to Election	None
	Palm Shores	848	Yes	See §166.031	N/A	N/A	N/A	N/A	—	N/A	N/A
	Rockledge	24,245	Yes	See §166.031	N/A	N/A	N/A	N/A	—	N/A	N/A
	Satellite Beach	9,811	Yes	See §166.031	N/A	N/A	N/A	N/A	—	N/A	N/A
	Titusville	43,767	Yes	See §166.031	N/A	N/A	N/A	N/A	—	N/A	N/A
	West Melbourne	15,054	Yes	See §166.031	N/A	N/A	N/A	N/A	—	N/A	N/A
Unincorporated: 209,885 (39.5%)											
Polk County		542,912	No	7%	1 Year (Update Quarterly) (Plus 30 Days)	Supervisor of Elections	General	No Less than 45 Days Following	NO	Published w/in 14 Days of Signature Validation	None
	Auburndale	12,381	Yes	See §166.031	N/A	N/A	N/A	N/A	—	N/A	N/A
	Bartow	16,278	Yes	See §166.031	N/A	N/A	N/A	N/A	—	N/A	N/A
	Davenport	2,017	No	20%	None	City Clerk	General or Special	Between 60 and 120 Days Following Validation	NO	At Least 1 Newspaper; At Least 30 Days Prior to Election	None
	Dundee	3,064	Yes	See §166.031	N/A	N/A	N/A	N/A	—	N/A	N/A
	Eagle Lake	2,489	No	10% (Default)	None	City Clerk	Special	No Less Than 45 Days Following Council Action	NO	1 in 5th Week Prior to the Election and 1 in 3rd Week Prior to the Election	None

**APPENDIX 1:
Florida County and Municipal Charters**

County	Municipality	Population (2005)	Only Subject to §166.031	Percentage of Elector Signatures Required	Submission Date	Verification Official	Election Type	Time to Election	Economic Impact Requirements	Notification Guidelines	Withdrawl Guidelines
	Fort Meade	5,742	*	*	*	*	*	*	*	*	*
	Frostproof	2,950	Yes	See §166.031	N/A	N/A	N/A	N/A	—	N/A	N/A
	Haines City	16,371	No	20%	None	"Designated Official"	General or Special	No Less than 60 Days Following	NO	None	None
	Highland Park	264	*	*	*	*	*	*	*	*	*
	Hillcrest Heights	285	*	*	*	*	*	*	*	*	*
	Lake Alfred	3,930	No	10%	None	City Clerk	General or Special	No Less than 60 Days Following	NO	None	None
	Lake Hamilton	1,414	*	*	*	*	*	*	*	*	*
	Lake Wales	12,964	Yes	See §166.031	N/A	N/A	N/A	N/A	—	N/A	N/A
	Lakeland	88,713	Yes	See §166.031	N/A	N/A	N/A	N/A	—	N/A	N/A
	Mulberry	3,233	Yes	See §166.031	N/A	N/A	N/A	N/A	—	N/A	N/A
	Polk City	1,522	No	10%	None	"Designated Official"	General or Special	No Less than 60 Days Following	NO	None	None
	Winter Haven	29,501	Yes	See §166.031	N/A	N/A	N/A	N/A	—	N/A	N/A
Unincorporated: 339,794 (62.6%)											
Hardee		28,286									
	Bowling Green	2,928	No	Established by Ordinance	Established by Ordinance	Established by Ordinance	Established by Ordinance	Established by	Established by Ordinance	Established by Ordinance	Established by Ordinance
	Wauchula	4,450	*	*	*	*	*	*	*	*	*
	Zolfo Springs	1,666	*	*	*	*	*	*	*	*	*
Unincorporated: 19,242 (68.0%)											
DeSoto County		35,406									
	Arcadia	7,151	Yes	See §166.031	N/A	N/A	N/A	N/A	—	N/A	N/A
Unincorporated: 28,255 (79.8%)											
Highlands County		95,496									
	Avon Park	8,872	Yes	See §166.031	N/A	N/A	N/A	N/A	—	N/A	N/A

**APPENDIX 1:
Florida County and Municipal Charters**

County	Municipality	Population (2005)	Only Subject to §166.031	Percentage of Elector Signatures Required	Submission Date	Verification Official	Election Type	Time to Election	Economic Impact Requirements	Notification Guidelines	Withdrawal Guidelines
	Lake Placid	1,784	No	10%	None	Town Clerk and County Supervisor of Elections	General or Special	No Less than 120 Days Following	NO	None	None
	Sebring	10,431	Yes	See §166.031	N/A	N/A	N/A	N/A	—	N/A	N/A
Unincorporated: 74,409 (77.9%)											
Okeechobee County		39,836									
	Okeechobee	5,900	Yes	See §166.031	N/A	N/A	N/A	N/A	—	N/A	N/A
Unincorporated: 33,936 (85.2%)											
Pasco		429,065									
	Dade City	6,823	Yes	See §166.031	N/A	N/A	N/A	N/A	—	N/A	N/A
	New Port Richey	16,928	No	10%	None	City Election Authorities	General or Special	Between 60 and 120 Days Following	NO	At Least 1 Newspaper; 30 Days Prior to Election	Prior to 15th Day Preceding Vote
	Port Richey	3,333	No	10%	90 Days (Plus 10 Days)	City Election Authorities	General or Special	Upon Delivery and Validation	NO	At Least 1 Newspaper; At Least 30 Days Prior to Election	Prior to 15th Day Preceding Vote
	San Antonio	975	Yes	See §166.031	N/A	N/A	N/A	N/A	—	N/A	N/A
	St. Leo	936	No	10%	None	Town Clerk	General or	No Less	NO	None	None
	Zephyrhills	12,258	Yes	See §166.031	N/A	N/A	N/A	N/A	—	N/A	N/A
Unincorporated: 387,812 (90.4%)											
Hillsborough County		1,132,152	No	8% in Half of 4 Districts	180 Days	Supervisor of Elections	General	None	NO	None	None
	Plant City	31,450	Yes	See §166.031	N/A	N/A	N/A	N/A	—	N/A	N/A
	Tampa	325,989	Yes	See §166.031	N/A	N/A	N/A	N/A	—	N/A	N/A
	Temple Terrace	21,978	Yes	See §166.031	N/A	N/A	N/A	N/A	—	N/A	N/A
Unincorporated: 752,735 (66.5%)											

**APPENDIX 1:
Florida County and Municipal Charters**

County	Municipality	Population (2005)	Only Subject to §166.031	Percentage of Elector Signatures Required	Submission Date	Verification Official	Election Type	Time to Election	Economic Impact Requirements	Notification Guidelines	Withdrawal Guidelines
Pinellas County		928,032	No	10% (District Exceptions)	180 Days	Clerk of Board of County Commissioners & Supervisor of Elections	General	No Less than 90 Days Following Validation	NO	1 Time per Wk, 4 Wks, No Less than 45 Days Before Referendum	None
	Belleair	4,170	Yes	See §166.031	N/A	N/A	N/A	N/A	—	N/A	N/A
	Belleair Beach	1,628	No	10%	None	City Election Authorities	General or Special	Upon Delivery and Validation	NO	At Least 1 Newspaper; At Least 30 Days Prior to Election	None
	Belleair Bluffs	2,224	Yes	See §166.031	N/A	N/A	N/A	N/A	—	N/A	N/A
	Belleair Shores	76	Yes	See §166.031	N/A	N/A	N/A	N/A	—	N/A	N/A
	Clearwater	108,687	No	10%	None	City Clerk	General or Special	Between 90 and 150 Days Following	NO	None	None
	Dunedin	36,690	Yes	See §166.031	N/A	N/A	N/A	N/A	—	N/A	N/A
	Gulfport	12,661	No	10% (Default)	Between 120 and 180 Days Prior Next General Election	City Clerk	General	w/in 90 Days Following Validation	NO	None	None
	Indian Rocks Beach	5,265	No	15%	Anytime	City Commission	General or Special	Between 30 Days and 1Yr. Following	NO	None	Prior to 15th Day Preceding Vote
	Indian Shores	1,787	Yes	See §166.031	N/A	N/A	N/A	N/A	—	N/A	N/A
	Kenneth City	4,419	No	10%	None	"Designated Official"	General or Special	No Less Than 60 Days Following	NO	None	None
	Largo	74,473	Yes	See §166.031	N/A	N/A	N/A	N/A	—	N/A	N/A
	Madeira Beach	4,464	Yes	See §166.031	N/A	N/A	N/A	N/A	—	N/A	N/A
	North Redington Beach	1,517	Yes	See §166.031	N/A	N/A	N/A	N/A	—	N/A	N/A
	Oldsmar	13,552	Yes	See §166.031	N/A	N/A	N/A	N/A	—	N/A	N/A
	Pinellas Park	47,352	Yes	See §166.031	N/A	N/A	N/A	N/A	—	N/A	N/A

**APPENDIX 1:
Florida County and Municipal Charters**

County	Municipality	Population (2005)	Only Subject to §166.031	Percentage of Elector Signatures Required	Submission Date	Verification Official	Election Type	Time to Election	Economic Impact Requirements	Notification Guidelines	Withdrawal Guidelines
	Redington Beach	1,525	Yes	See §166.031	N/A	N/A	N/A	N/A	—	N/A	N/A
	Redington Shores	2,065	Yes	See §166.031	N/A	N/A	N/A	N/A	—	N/A	N/A
	Safety Harbor	17,517	Yes	See §166.031	N/A	N/A	N/A	N/A	—	N/A	N/A
	Seminole	18,505	Yes	See §166.031	N/A	N/A	N/A	N/A	—	N/A	N/A
	South Pasadena	5,715	Yes	See §166.031	N/A	N/A	N/A	N/A	—	N/A	N/A
	St. Pete Beach	10,173	No	10%	None	"Designated Official"	General or Special	No Less Than 60 Days Following	NO	None	None
	St. Petersburg	249,079	Yes	See §166.031	N/A	N/A	N/A	N/A	—	N/A	N/A
	Tarpon Springs	22,651	Yes	See §166.031	N/A	N/A	N/A	N/A	—	N/A	N/A
	Treasure Island	7,542	No	25%	w/in 90 Days	City Clerk	General or Special	Between 60 and 120 Days Following	NO	None	Any Time By 4 of 20 Committee Members
Unincorporated: 274,295 (29.6%)											
Manatee County		306,779									
	Anna Maria	1,867	No	15%	None	"Designated Official"	General or Special	No Less than 60 Days Following	NO	None	None
	Bradenton	53,917	Yes	See §166.031	N/A	N/A	N/A	N/A	—	N/A	N/A
	Bradenton Beach	1,561	Yes	See §166.031	N/A	N/A	N/A	N/A	—	N/A	N/A
	Holmes Beach	5,100	No	10%	None	"Designated Official"	General or Special	w/in 90 Days Following Validation	NO	None	None
	Longboat Key (partial)	2,627	No	10%	w/in 90 Days	Town Commission	Referendum	w/in 6 months	NO	1 Newspaper; Between 7 and 60 Days Prior to	None
	Palmetto	13,510	No	15%	None	City Commission	General	None	NO	None	None
Unincorporated: 228,197 (74.4%)											

**APPENDIX 1:
Florida County and Municipal Charters**

County	Municipality	Population (2005)	Only Subject to §166.031	Percentage of Elector Signatures Required	Submission Date	Verification Official	Election Type	Time to Election	Economic Impact Requirements	Notification Guidelines	Withdrawal Guidelines
Sarasota County		366,256	No	5%	180 Days	Supervisor of Elections	Special	w/in 60 Days Following Validation	NO	None	None
	Longboat Key (partial)	4,956	No	10%	w/in 90 Days	Town Commission	General	w/in 6 months	NO	1 Newspaper; Between 7 and 60 Days Prior to	None
	North Port	42,253	Yes	See §166.031	N/A	N/A	N/A	N/A	—	N/A	N/A
	Sarasota	53,711	No	10%	w/in 90 Days	City Commission	Referendum	None	NO	1 Newspaper; Between 30 and 60 Days Prior to Election	None
	Venice	20,974	No	10%	w/in 90 Days	City Council	Referendum	Between 30 and 60 Days Following Validation	NO	None	None
Unincorporated: 244,362 (66.7%)											
Charlotte County		157,536	No	10%	6 Months	Supervisor of Elections	General	No Less than 90 Days Following	*NO*	None	None
	Punta Gorda	17,111	Yes	See §166.031	N/A	N/A	N/A	N/A	—	N/A	N/A
Unincorporated: 140,425 (89.1%)											
Glades		11,252									
	Moore Haven	1,751	*	*	*	*	*	*	*	*	*
Unincorporated: 9,501 (84.4%)											
Lee County		544,758	No	7%	180 Days	Supervisor of Elections	General	No Less than 90 Days Following	NO	None	None
	Bonita Springs	37,992	Yes	See §166.031	N/A	N/A	N/A	N/A	—	N/A	N/A
	Cape Coral	140,010	Yes	See §166.031	N/A	N/A	N/A	N/A	—	N/A	N/A
	Fort Meyers	58,428	Yes	See §166.031	N/A	N/A	N/A	N/A	—	N/A	N/A
	Fort Meyers Beach	6,834	Yes	See §166.031	N/A	N/A	N/A	N/A	—	N/A	N/A

**APPENDIX 1:
Florida County and Municipal Charters**

County	Municipality	Population (2005)	Only Subject to §166.031	Percentage of Elector Signatures Required	Submission Date	Verification Official	Election Type	Time to Election	Economic Impact Requirements	Notification Guidelines	Withdrawal Guidelines
	Sanibel	6,072	No	10%	None	"Designated Official"	General or Special	No Less than 60 Days Following	NO	None	None
Unincorporated: 295,422 (54.2%)											
Hendry 39,561											
	Clewiston	7,173	Yes	See §166.031	N/A	N/A	N/A	N/A	—	N/A	N/A
	Labelle	4,551	Yes	See §166.031	N/A	N/A	N/A	N/A	—	N/A	N/A
Unincorporated: 27,837 (70.4%)											
Collier 307,242											
	Everglades City	519	*	*	*	*	*	*	*	*	*
	Marco Island	16,109	No	10%	w/in 45 Days	County Supervisor of Elections	General or Special	No Less than 90 Days Following Validation; Special-Same Time,	NO	None	Prior to 40th Day Preceding Vote
	Naples	21,709	Yes	See §166.031	N/A	N/A	N/A	N/A	—	N/A	N/A
Unincorporated: 268,905 (87.5%)											
Indian River County 128,594											
	Fellsmere	4,800	Yes	See §166.031	N/A	N/A	N/A	N/A	—	N/A	N/A
	Indian River Shores	3,550	Yes	See §166.031	N/A	N/A	N/A	N/A	—	N/A	N/A
	Orchid	292	Yes	See §166.031	N/A	N/A	N/A	N/A	—	N/A	N/A
	Sebastian	19,643	Yes	See §166.031	N/A	N/A	N/A	N/A	—	N/A	N/A
	Vero Beach	17,078	No	10% (Default)	90 Days Prior to Next Election	Supervisor of Elections/City Council	None	None	NO	None	None
Unincorporated: 83,231 (64.7%)											
St. Lucie County 241,305											
	Fort Pierce	38,552	Yes	See §166.031	N/A	N/A	N/A	N/A	—	N/A	N/A

**APPENDIX 1:
Florida County and Municipal Charters**

County	Municipality	Population (2005)	Only Subject to §166.031	Percentage of Elector Signatures Required	Submission Date	Verification Official	Election Type	Time to Election	Economic Impact Requirements	Notification Guidelines	Withdrawal Guidelines
	Port St. Lucie	131,692	No	15%	w/in 30 Days (Plus 10 Days)	City Clerk	General or Special	Between 30 and 90 Days Following Validation	NO	None	Prior to 15th Day Preceding Vote
	St. Lucie Village	586	*	*	*	*					
Unincorporated: 70,475 (29.2%)											
Martin		139,728									
	Jupiter Island	661	Yes	See §166.031	N/A	N/A	N/A	N/A	—	N/A	N/A
	Ocean Breeze Park	458	No	Established by Ordinance	Established by Ordinance	Established by Ordinance	Established by Ordinance	Established by Ordinance	Established by Ordinance	Established by Ordinance	Established by Ordinance
	Sewall's Point	2,058	Yes	See §166.031	N/A	N/A	N/A	N/A	—	N/A	N/A
	Stuart	15,764	No	10%	w/in 60 Days (Plus 30 Days)	City Clerk	General or Special	Between 30 and 120 Days Following	NO	None	Prior to 15th Day Preceding Vote
Unincorporated: 120,787 (86.4%)											
Palm Beach County		1,268,548	No	7%	180 Days	Supervisor of Elections	General	1st Tues After 1st Mon of Nov. or Presidential Primary at Least 30 Days	NO	None	None
	Atlantis	2,142	Yes	See §166.031	N/A	N/A	N/A	N/A	—	N/A	N/A
	Belle Glade	15,423	Yes	See §166.031	N/A	N/A	N/A	N/A	—	N/A	N/A
	Boca Raton	86,632	No	10%	(Plus 10 Days)	City Clerk	General or Special	Between 60 Days and 3 Months Following Validation	NO	None	None
	Boynton Beach	66,885	Yes	See §166.031	N/A	N/A	N/A	N/A	—	N/A	N/A
	Cloud Lake	176	*	*	*	*	*	*	*	*	*
	Delray Beach	64,757	Yes	See §166.031	N/A	N/A	N/A	N/A	—	N/A	N/A
	Glen Ridge	277	*	*	*	*	*	*	*	*	*
	Golf	239	*	*	*	*	*	*	*	*	*
	Greenacres	32,525	Yes	See §166.031	N/A	N/A	N/A	N/A	—	N/A	N/A

**APPENDIX 1:
Florida County and Municipal Charters**

County	Municipality	Population (2005)	Only Subject to §166.031	Percentage of Elector Signatures Required	Submission Date	Verification Official	Election Type	Time to Election	Economic Impact Requirements	Notification Guidelines	Withdrawl Guidelines
	Gulfstream	751	Yes	See §166.031	N/A	N/A	N/A	N/A	—	N/A	N/A
	Haverhill	1,621	Yes	See §166.031	N/A	N/A	N/A	N/A	—	N/A	N/A
	Highland Beach	4,123	Yes	See §166.031	N/A	N/A	N/A	N/A	—	N/A	N/A
	Hypoluxo	2,612	Yes	See §166.031	N/A	N/A	N/A	N/A	—	N/A	N/A
	Juno Beach	3,395	*	*	*	*	*	*	*	*	*
	Jupiter	47,909	Yes	See §166.031	N/A	N/A	N/A	N/A	—	N/A	N/A
	Jupiter Inlet Colony	390	*	*	*	*	*	*	*	*	*
	Lake Clarke Shores	3,460	Yes	See §166.031	N/A	N/A	N/A	N/A	—	N/A	N/A
	Lake Park	9,039	Yes	See §166.031	N/A	N/A	N/A	N/A	—	N/A	N/A
	Lake Worth	36,342	Yes	See §166.031	N/A	N/A	N/A	N/A	—	N/A	N/A
	Lantana	10,498	Yes	See §166.031	N/A	N/A	N/A	N/A	—	N/A	N/A
	Manalapan	341	No	25%	None	Town Clerk	General or Special	No Less than 60 days Following Validation	NO	None	None
	Mangonia Park	1,283	Yes	See §166.031	N/A	N/A	N/A	N/A	—	N/A	N/A
	North Palm Beach	12,633	Yes	See §166.031	N/A	N/A	N/A	N/A	—	N/A	N/A
	Ocean Ridge	1,699	Yes	See §166.031	N/A	N/A	N/A	N/A	—	N/A	N/A
	Pahokee	6,554	Yes	See §166.031	N/A	N/A	N/A	N/A	—	N/A	N/A
	Palm Beach	9,852	No	10%	At Least 90 Days Prior to General Election	Town Council	General	Next General Election (No Less than 90	NO	None	None
	Palm Beach Gardens	48,989	Yes	See §166.031	N/A	N/A	N/A	N/A	—	N/A	N/A
	Palm Beach Shores	1,515	Yes	See §166.031	N/A	N/A	N/A	N/A	—	N/A	N/A
	Palm Springs	15,267	No	10%	None	Village Clerk	General or Special	Between 60 and 90 Days Following Validation	NO	None	None
	Riviera Beach	33,772	Yes	See §166.031	N/A	N/A	N/A	N/A	—	N/A	N/A
	Royal Palm Beach	30,886	Yes	See §166.031	N/A	N/A	N/A	N/A	—	N/A	N/A
	South Bay	4,059	Yes	See §166.031	N/A	N/A	N/A	N/A	—	N/A	N/A

**APPENDIX 1:
Florida County and Municipal Charters**

County	Municipality	Population (2005)	Only Subject to §166.031	Percentage of Elector Signatures Required	Submission Date	Verification Official	Election Type	Time to Election	Economic Impact Requirements	Notification Guidelines	Withdrawal Guidelines
	South Palm Beach	1,530	No	15%	None	Town Clerk	Special or General	General-w/in 90 Days; Special-Tuesday of Council's Choosing Between 30 and 60 Days Following Validation	NO	None	None
	Tequesta	5,989	Yes	See §166.031	N/A	N/A	N/A	N/A	—	N/A	N/A
	Wellington	53,583	No	10%	w/in 90 Days (Plus 10 Days)	Village Clerk	General or Special	Between 30 and 60 Days Following Validation	NO	None	Prior to 15th Day Preceding Vote
	West Palm Beach	97,498	Yes	See §166.031	N/A	N/A	N/A	N/A	—	N/A	N/A
Unincorporated: 553,490 (43/6%)											
Broward County		1,777,638	No	10% (Max. 25% Per District)	180 Days	County Administrator/S upervisor of Elections	General or Special	Next Countywide (After 90 Days) or Special (Between 90 and 120	NO	None	None
	Coconut Creek	49,017	Yes	See §166.031	N/A	N/A	N/A	N/A	—	N/A	N/A
	Cooper City	30,022	Yes	See §166.031	N/A	N/A	N/A	N/A	—	N/A	N/A
	Coral Springs	128,804	Yes	See §166.031	N/A	N/A	N/A	N/A	—	N/A	N/A
	Dania/Dania Beach	28,782	Yes	See §166.031	N/A	N/A	N/A	N/A	—	N/A	N/A
	Davie	84,204	Yes	See §166.031	N/A	N/A	N/A	N/A	—	N/A	N/A
	Deerfield Beach	76,348	No	10% (Default)	90 Days (Plus 15 Days)	City Clerk	General or Special	Between 45 and 180 Days Following Validation	NO	At Least Once, 10 Days Prior to Election (Title Only)	Chairperson + 51 Committee Members
	Fort Lauderdale	167,380	Yes	See §166.031	N/A	N/A	N/A	N/A	—	N/A	N/A

**APPENDIX 1:
Florida County and Municipal Charters**

County	Municipality	Population (2005)	Only Subject to §166.031	Percentage of Elector Signatures Required	Submission Date	Verification Official	Election Type	Time to Election	Economic Impact Requirements	Notification Guidelines	Withdrawal Guidelines
	Hallandale/Hallandale Beach	37,083	No	10%	None	City Clerk	General or Special	No Less than 60 Days Following	NO	None	None
	Hillsboro Beach	2,329	Yes	See §166.031	N/A	N/A	N/A	N/A	—	N/A	N/A
	Hollywood	145,629	No	15% in Each of 4 Districts & 15% of City (As a Whole)	(Plus 10 Days)	City Clerk	General or Special	Between 90 and 120 Days Following	NO	None	None
	Lauderdale Lakes	31,826	No	10%	None	City Clerk	General or Special	Between 30 and 90 Days Following Validation	NO	None	None
	Lauderdale-By-The-Sea	5,990	*	*	*	*	*	*	*	*	*
	Lauderhill	59,621	Yes	See §166.031	N/A	N/A	N/A	N/A	—	N/A	N/A
	Lazy Lake	39	Yes	See §166.031	N/A	N/A	N/A	N/A	—	N/A	N/A
	Lighthouse Point	11,262	Yes	See §166.031	N/A	N/A	N/A	N/A	—	N/A	N/A
	Margate	56,002	Yes	See §166.031	N/A	N/A	N/A	N/A	—	N/A	N/A
	Miramar	106,623	Yes	See §166.031	N/A	N/A	N/A	N/A	—	N/A	N/A
	North Lauderdale	42,262	Yes	See §166.031	N/A	N/A	N/A	N/A	—	N/A	N/A
	Oakland Park	31,713	Yes	See §166.031	N/A	N/A	N/A	N/A	—	N/A	N/A
	Parkland	22,145	Yes	See §166.031	N/A	N/A	N/A	N/A	—	N/A	N/A
	Pembroke Park	5,487	Yes	See §166.031	N/A	N/A	N/A	N/A	—	N/A	N/A
	Pembroke Pines	150,380	Yes	See §166.031	N/A	N/A	N/A	N/A	—	N/A	N/A
	Plantation	85,989	Yes	See §166.031	N/A	N/A	N/A	N/A	—	N/A	N/A
	Pompano Beach	104,179	Yes	See §166.031	N/A	N/A	N/A	N/A	—	N/A	N/A
	Sea Ranch Lakes	761	Yes	See §166.031	N/A	N/A	N/A	N/A	—	N/A	N/A
	Southwest Ranches	7,388	No	10%	None	None	General or Special	Between 60 and 120 Days Following	NO	None	None

**APPENDIX 1:
Florida County and Municipal Charters**

County	Municipality	Population (2005)	Only Subject to §166.031	Percentage of Elector Signatures Required	Submission Date	Verification Official	Election Type	Time to Election	Economic Impact Requirements	Notification Guidelines	Withdrawal Guidelines
	Sunrise	90,589	No	15% (5% to Commence)	w/in 90 Days (Plus 15 Days)	City Clerk	General or Special	Between 45 and 180 Days Following Validation	NO	At Least Once, No More than 10 Days Prior to Election (Title Only)	Any Time
	Tamarac	59,923	Yes	See §166.031	N/A	N/A	N/A	N/A	—	N/A	N/A
	Weston	65,679	No	10%	w/in 60 Days (Plus 10 Days)	City Clerk	General or Special	Between 30 and 60 Days Following Validation	NO	None	Any Time
	West Park	*	*	*	*	*	*	*	*	*	*
	Wilton Manors	12,858	Yes	See §166.031	N/A	N/A	N/A	N/A	—	N/A	N/A
Unincorporated: 77,324 (4.3%)											
Miami-Dade County		2,376,014	No (State Constitution)	4%	60 Days	Supervisor of Elections	General	Next Countywide Between 60 and 120 Days Following Validation Or If 8%, 1st Tues. After 120 Days	NO	None	None
	Aventura	29,391	County Charter	10%	w/in 60 Days (Plus 10 Days)	City Clerk	General or Special	General-60 to 120 Days; Special Otherwise & Between 30 and 60 Days	NO	None	Prior to 15th Day Preceding Vote
	Bal Harbour	3,272	County Charter	20%	(Plus 10 Days)	Clerk of the Circuit Court & Village Clerk	General or Special	General-60 to 120 Days; Special Otherwise & Between 30 Days and 1 Year	NO	None	None

**APPENDIX 1:
Florida County and Municipal Charters**

County	Municipality	Population (2005)	Only Subject to §166.031	Percentage of Elector Signatures Required	Submission Date	Verification Official	Election Type	Time to Election	Economic Impact Requirements	Notification Guidelines	Withdrawal Guidelines
	Bay Harbor Islands	5,093	County Charter	20%	(Plus 10 Days)	Clerk of the Circuit Court & Town Clerk	General or Special	General-60 to 120 Days; Special Otherwise & Between 30 Days and 1 Year	NO	None	None
	Biscayne Park	3,128	County Charter	10%	60 Days	Clerk of the Circuit Court	General or Special	General-60 to 120 Days; Special Otherwise	NO	None	None
	Coral Gables	42,871	County Charter	10%	60 Days	Clerk of the Circuit Court	General or Special	General-60 to 120 Days; Special Otherwise	NO	None	None
	Cutler Bay		County Charter	10%	w/in 60 Days (Plus 10 Days)	Clerk of the Circuit Court & City Clerk	General or Special	General-60 to 120 Days; Special Otherwise & Between 45 and 75 Days	NO	None	Prior to 15th Day Preceding Vote
	Doral	21,895	County Charter	10%	w/in 60 Days (Plus 10 Days)	Clerk of the Circuit Court & City Clerk	General or Special	General-60 to 120 Days; Special Otherwise & Between 30 and 60 Days	NO	None	Prior to 15th Day Preceding Vote
	El Portal	2,427	County Charter	10%	w/in 60 Days	City Clerk (Council if Ruled Insufficient)	General or Special	General-60 to 120 Days; Special Otherwise & Between 30 and 60 Days	NO	None	Prior to 15th Day Preceding Vote
	Florida City	8,913	County Charter	10%	None	Clerk of the Circuit Court	General or Special	General-60 to 120 Days; Special Otherwise	NO	None	None

**APPENDIX 1:
Florida County and Municipal Charters**

County	Municipality	Population (2005)	Only Subject to §166.031	Percentage of Elector Signatures Required	Submission Date	Verification Official	Election Type	Time to Election	Economic Impact Requirements	Notification Guidelines	Withdrawal Guidelines
	Golden Beach	906	County Charter	25%	(Plus 10 Days)	Clerk of the Circuit Court & Town Clerk	General or Special	General-60 to 120 Days; Special Otherwise & Between 30 and 60 Days	NO	None	Prior to 15th Day Preceding Vote
	Hialeah	220,485	County Charter	10%	w/in 60 Days (Plus 10 Days)	City Clerk	General or Special	Between 30 and 60 Days After Council Considers	NO	None	Prior to 15th Day Preceding Vote
	Hialeah Gardens	19,930	County Charter	10%	60 Days	Clerk of the Circuit Court	General or Special	General-60 to 120 Days; Special Otherwise	NO	None	None
	Homestead	44,494	County Charter	10%	60 Days	Clerk of the Circuit Court	General or Special	General-60 to 120 Days; Special Otherwise	NO	None	None
	Indian Creek Village	38	County Charter	10%	60 Days	County Supervisor of Elections	General or Special	General-60 to 120 Days; Special Otherwise	NO	None	None
	Key Biscayne	10,158	County Charter	10%	w/in 60 Days (Plus 10 Days)	City Clerk	General or Special	General-60 to 120 Days; Special Otherwise & Between 30 and 60 Days After Council Considers	NO	None	Prior to 15th Day Preceding Vote
	Medley	1,059	County Charter	10%	60 Days	Clerk of the Circuit Court	General or Special	General-60 to 120 Days; Special Otherwise	NO	None	None
	Miami	386,417	County Charter	15%	w/in 30 Days (Plus 10 Days)	City Clerk	General or Special	No Less than 30 Days After Council	NO	None	None

**APPENDIX 1:
Florida County and Municipal Charters**

County	Municipality	Population (2005)	Only Subject to §166.031	Percentage of Elector Signatures Required	Submission Date	Verification Official	Election Type	Time to Election	Economic Impact Requirements	Notification Guidelines	Withdrawal Guidelines
	Miami Beach	87,925	County Charter	10%	w/in 120 Days (Plus 30 Days)	City Clerk (Miami-Dade County Department of Elections)	General or Special	General-60 to 120 Days; Special Otherwise	NO	None	None
	Miami Gardens	99,438	County Charter	5%	w/in 60 Days (Plus 10 Days)	City Clerk, Clerk of Circuit Court	General or Special	General-60 to 120 Days; Special Otherwise & Between 30 and 60 Days After Council Considers	NO	None	Prior to 15th Day Preceding Vote
	Miami Lakes	22,321	County Charter	10%	w/in 60 Days (Plus 10 Days)	City Clerk, Clerk of Circuit Court	General or Special	General-60 to 120 Days; Special Otherwise & Between 30 and 60 Days After Council Considers	NO	None	Prior to 15th Day Preceding Vote
	Miami Shores Village	10,040	County Charter	5% or 500 (Greater Amount)	(Plus 30 Days)	Village Council	General or Special	w/in 120 Days Following	NO	None	None
	Miami Springs	13,170	County Charter	15%	60 Days	Clerk of the Circuit Court & City Clerk	General or Special	General-60 to 120 Days; Special Otherwise & Between 30 and 60 Days After Council Considers	NO	None	Prior to 15th Day Preceding Vote
	North Bay Village	7,615	County Charter	10%	w/in 60 Days (Plus 10 Days)	City Clerk (Miami-Dade County Department of Elections)	General or Special	General-60 to 120 Days; Special Otherwise & Between 30 and 60 Days After Council Considers	NO	None	Prior to 10th Day Preceding Vote

**APPENDIX 1:
Florida County and Municipal Charters**

County	Municipality	Population (2005)	Only Subject to §166.031	Percentage of Elector Signatures Required	Submission Date	Verification Official	Election Type	Time to Election	Economic Impact Requirements	Notification Guidelines	Withdrawal Guidelines
	North Miami	57,654	County Charter	10%	60 Days	Clerk of the Circuit Court	General or Special	General-60 to 120 Days; Special Otherwise	NO	None	None
	North Miami Beach	39,442	County Charter	10%	60 Days	Clerk of the Circuit Court	General or Special	General-60 to 120 Days; Special Otherwise	NO	None	None
	Opa-Locka	15,763	County Charter	10%	60 Days	Clerk of the Circuit Court	General or Special	General-60 to 120 Days; Special Otherwise	NO	None	None
	Palmetto Bay	23,590	County Charter	10%	60 Days	Clerk of the Circuit Court	General or Special	General-60 to 120 Days; Special Otherwise	NO	None	None
	Pinecrest	19,204	County Charter	10%	w/in 60 Days (Plus 10 Days)	Village Clerk	General or Special	General-60 to 120 Days; Special-60 to 120 Days & Between 30 and 60 Days After Council Considers	NO	None	Prior to 15th Day Preceding Vote
	South Miami	11,147	County Charter	10%	60 Days	City Attorney, City Clerk, Clerk of the Circuit Court	General or Special	General-60 to 120 Days; Special Otherwise	NO	None	None
	Sunny Isles Beach	15,424	County Charter	10%	w/in 60 Days (Plus 10 Days)	City Clerk	General or Special	General-30 to 60 Days; Special Otherwise	NO	None	Prior to 15th Day Preceding Vote
	Surfside	4,710	County Charter	10%	60 Days	Clerk of the Circuit Court	General or Special	General-60 to 120 Days; Special Otherwise	NO	None	None
	Sweetwater	13,741	County Charter	10%	60 Days	Clerk of the Circuit Court	General or Special	General-60 to 120 Days; Special Otherwise	NO	None	None

**APPENDIX 1:
Florida County and Municipal Charters**

County	Municipality	Population (2005)	Only Subject to §166.031	Percentage of Elector Signatures Required	Submission Date	Verification Official	Election Type	Time to Election	Economic Impact Requirements	Notification Guidelines	Withdrawal Guidelines
	Virginia Gardens	2,260	County Charter	10%	60 Days	Clerk of the Circuit Court	General or Special	General-60 to 120 Days; Special Otherwise	NO	Full 2 Wks. Prior to Election; Post 4 Places in Village	None
	West Miami	5,829	*	*	*	*	*	*	*	*	*
Unincorporated: 1,126,264 (47.4%)											
Monroe County		76,329									
	Islamorada	6,606	Yes	See §166.031	N/A	N/A	N/A	N/A	—	N/A	N/A
	Key Colony Beach	796	No	25%	45 Days (Plus 10 Days)	City Clerk	Special or General	30-45 Days, Unless General w/in 60 Days Following Validation	NO	None	None
	Key West	23,935	No	General-10%; Special-20%	None	City Clerk	General or Special	General (Not Less than 60 Days Following Validation); Special (Cost to	NO	None	None
	Layton	191	Yes	See §166.031	N/A	N/A	N/A	N/A	—	N/A	N/A
	Marathon	9,822	No	10%	Between 60 and 90 Days (Plus 5 Days)	City Clerk	General or Special	w/in 30-50 Days of Action by Commission	NO	None	Prior to 15th Day Preceding Vote
Unincorporated: 34,979 (45.8%)											