

<i>Planned Land Use Totals</i>	426	535	50,000	-0-	134,010
<i>Allowable Variance +/- (%)</i>	15%	25%	25%	0%	10%
<i>Maximum Allowable Development</i>	490	669	62,500		147,411
<i>Minimum Allowable Development</i>	362	401	37,500		120,609

Maximum Allowable Vehicle Trips	Daily Traffic	PM Peak Hour Traffic
<i>Planned Land Use Net New Trips</i>	4,213	337

Allowable Land Use Ratios	Residential/Office	Residential/Other Non-Residential
<i>Maximum Allowable Ratios</i>	-	4.10
<i>Minimum Allowable Ratios</i>	-	2.40

INFRASTRUCTURE ELEMENT GOALS, OBJECTIVES AND POLICIES

GOAL *To provide and maintain the public infrastructure in a manner that will insure public health, safety, and quality of life for Riviera Beach.*

OBJECTIVE 1.1: Current Deficiencies

The City shall correct infrastructure deficiencies by implementing the stormwater, sanitary sewer and potable water policies specified below.

Policy 1.1.1: The City and the Community Redevelopment Agency shall work with developers to reduce direct drainage outfalls where feasible on the west side of Lake Worth between the FPL power plant and 34th Street.

Policy 1.1.2: The City shall coordinate with the South Florida Water Management District and the Northern Palm Beach County Improvement District to ensure that the two organizations more carefully monitor their drainage control gates in western Riviera Beach in order to reduce ponding. The City's Engineering Division shall assist in the monitoring program.

Policy 1.1.3: The City Utility District shall continue a phasing program for upgrading and replacing existing sewer lift stations and correcting groundwater infiltration through grouting, lining and other restoration techniques (as necessary). The program will be incorporated into the annual Capital Improvement Program.

Policy 1.1.4: The City Utility District shall continue a phasing program for upgrading and replacing existing wells, water mains and water treatment facilities (as necessary). The program will be incorporated into the annual Capital Improvement Program.

OBJECTIVE 1.2: Water and Sewer Facilities

The City shall construct and maintain sufficient utility infrastructure to provide potable water and sewer service in a manner to protect the public health and environment in accordance with applicable local, state and federal regulations.

Policy 1.2.1: The City Utility District shall continue to correct inflow and infiltration (I/I) of the sanitary sewer collection system.

Policy 1.2.2: In areas within the 100-year flood plain where existing public utility systems (e.g., potable water, sewer) require repair, rehabilitation or increased capacity, water and sewer lines shall be retrofitted to incorporate measures to prevent backflow, and should be adequately protected to prevent damage caused by erosion, scour, debris impact, velocity flow, and wave action. Once identified and costs estimated, the City will submit all projects for inclusion on the Palm Beach County Local Mitigation Strategy (LMS) Prioritized Ranking List.

Policy 1.2.3: All facility improvements involving replacement, expansion or capacity increase within the City Utility District service area shall be compatible with the adopted level of service standards for facility design as required by state and federal regulations.

Policy 1.2.4: The City shall continue to coordinate with the City of West Palm Beach to address and enforce violations associated with the East Central Region Water Reclamation Facility's Industrial Pre-Treatment Program and upstream sewerage infrastructure. As necessary, the City shall work with entities to reduce the concentration and/or quantity of unsuitable and undesirable components discharged by utility customers.

Policy 1.2.5: The City shall upgrade potable water treatment processes to provide aesthetically pleasing water, while meeting all regulatory requirements. The City shall implement improvements necessary for filtration, disinfection, trihalomethanes and other regulated contaminants. Over the next 10 years, the City will evaluate the feasibility and need for constructing a low-pressure reverse osmosis treatment facility to replace its current lime softening water plant. Such an analysis will be dependent upon available water supplies, economic viability and changing regulations.

OBJECTIVE 1.3: Solid Waste

The City shall continue to advocate a reduction in the per capita amount of solid waste trucked to the County disposal site.

Policy 1.3.1: The City shall support efforts by its contracted solid waste hauler to separate solid waste at the curbside into glass, plastic, aluminum and trees/yard trimmings (all of which is recycled). Recycling of tires and batteries will be explored.

Policy 1.3.2: It is the policy of the City to avoid adverse impacts of garbage trucks in residential neighborhoods, and to coordinate with the County Solid Waste Authority regarding the operation of the incinerator in order to avoid the impact of smoke on established residential neighborhoods.

Policy 1.3.3: The City shall continue working to eliminate community trash piles citywide. This activity shall be coordinated with the Palm Beach County Solid Waste Authority and the City's contracted waste hauler to ensure that these community trash piles and debris are disposed of according to regulations outlined the Land Development Code.

Policy 1.3.4: The City shall continue its outreach programs to educate residents on reducing, reusing and recycling materials in an effort to minimize waste impacts to landfill disposal sites.

OBJECTIVE 1.4: Stormwater

Policy 1.4.1: The City shall not approve any new direct discharges of stormwater into coastal waters.

Policy 1.4.2: The City will actively participate on the Palm Beach County Local Mitigation Strategy (LMS) Steering Committee.

Policy 1.4.3: All stormwater projects shall be submitted to the LMS Program for inclusion on the Countywide list of Prioritized Projects and shall be included in the City's Capital Improvements Element.

Policy 1.4.4: The City shall allow the maximum impervious coverage as follows:

- Single family residential districts are allowed up to 60% impervious coverage;
- Multi-family residential districts are allowed up to 70% impervious coverage;
- Commercial districts are allowed up to 70% impervious coverage;
- Industrial districts are allowed up to 85% impervious coverage.
- Within the CRA, alternative stormwater management methods appropriate for urban development, such as baffle boxes, exfiltration systems, cistern/rooftop storage, and pervious pavement may be used to allow higher percentages of impervious coverage. Alternative stormwater management systems shall be designed to provide equal or better stormwater storage and treatment and shall be subject to approval by the City Engineer. The downtown zoning districts shall establish maximum lot coverage criteria.

Policy 1.4.5: The City shall continue to review data from the existing surface water quality monitoring network to identify point-source and non-point source water quality problem areas and develop and implement programs designed to reduce point and non-point source discharges to surface waters. The City shall continue to enforce Surface Water Quality Standards and the Stormwater Pollution Prevention Ordinance throughout its jurisdiction. The City shall comply with the U.S. EPA National Pollutant Discharge Elimination System (NPDES) stormwater permit requirements.

Policy 1.4.6: The City shall not take any land use actions which are inconsistent with County, State, and South Florida Water Management District efforts to maintain and/or improve water quality in the Lake Worth estuary, or are in conflict with an adopted surface water improvement and management plan.

Policy 1.4.7: The City supports the implementation of the Lake Worth Lagoon Management Plan. As part of that effort, the City will coordinate with the County on stormwater discharges

into the Lake Worth Lagoon and other estuarine waters, to implement actions which will meet or exceed the State's Class III Surface Water Quality Standards.

Policy 1.4.8: The City shall continue to work toward reducing direct stormwater outfalls into Lake Worth.

Policy 1.4.9: The City shall continue to enforce the provisions of the Wellfield Protection Ordinance.

Policy 1.4.10: The City shall continue to upgrade its stormwater system infrastructure by implementing water quality and flood control improvements in accordance with its adopted 'Stormwater Master Plan'.

OBJECTIVE 1.5: Level of Service

The City shall provide an adequate level of service during the planning period; see policies for measurable standards.

Policy 1.5.1: Sanitary sewer: The City sanitary sewer collection system shall accommodate an average daily flow of at least 135 gallons per person.

Policy 1.5.2: Solid waste: The City has a solid waste level of service standard of 6 pounds per capita per day. The City shall maintain an agreement with the County that specifies a minimum level of service for residential refuse collection twice per week bulk trash collection, once per week vegetation collection and once per week recyclable collection. A minimum level of service for commercial garbage and trash collection shall be maintained at once per week.

Policy 1.5.3: Stormwater: All new development retain on site the rainfall from a one-hour storm that statistically occurs once in 3 years, an amount estimated to be 2.7 inches. Roadway and parking lot finished elevations shall be at or above the peak stage elevation for the 5-year 1-day storm event. Building ground floor elevations shall be above the 100-year 3-day storm stage elevation or one foot above the crown of the road, whichever is greater. The stormwater system of new developments shall also be designed to comply with the water quantity and quality requirements of the appropriate permitting agency but post-development runoff shall not exceed pre-development runoff.

Policy 1.5.4: Potable Water: The City's water system shall provide 177 gallons per person per day (average) with a storage capacity of 4,300,000 gallons at sufficient water pressure to meet fire flow demands as determined by the Fire Chief.

Policy 1.5.5: The City shall pursue the piping of canals to the extent feasible and economical.

Policy 1.5.6: The City shall coordinate with the South Florida Water Management District (SFWMD) in the development of the City's Water Supply Plan, which will provide adequate water for the conservation, and restoration of native ecosystems, agricultural, domestic, public water supply, and industrial needs.

Policy 1.5.7: The City shall encourage and promote the use of water reclamation activities at the East Central Regional Water Reclamation Facility including, but not limited to, the use of

reclaimed water irrigation and process water systems, constructed wetlands, aquifer storage and recovery wells, groundwater recharge, and indirect reuse systems.

Policy 1.5.8: The City, prior to approving a building permit, will consult with the City Utility District to determine whether adequate water supplies to serve the new development will be available no later than the anticipated date of issuance of a certificate of occupancy by the City.

OBJECTIVE 1.6: Water Conservation

The City shall achieve the capability to reduce water consumption by 15 percent in times of a water supply emergency and reduce water consumption by 5 percent on a permanent basis for City-owned or maintained areas.

Policy 1.6.1: In case of the event of low water supply, the City shall adopt an emergency water shortage ordinance by 2012 in adherence with the South Florida Water Management District emergency water shortage rules, including requirements for water saving techniques and the implementation of fixtures that conserve water.

Policy 1.6.2: The City shall whenever possible use xeriscape landscaping in street medians to reduce water consumption. If the City bids out such work, this will become a condition of the bid document.

Policy 1.6.3: The City shall integrate water conservation measures as part of its routine maintenance program to reduce water consumption for City-owned buildings, properties, parks and landscaped medians.

Policy 1.6.4: The City shall encourage and support a coordinated regulatory and programmatic approach for the protection of aquifer recharge areas and for environmental protection efforts.

Policy 1.6.5: The City shall provide educational materials to the public focusing on water conservation techniques and water conserving devices.

Policy 1.6.6: The City shall require the use of water conserving fixtures and drought tolerant landscaping, specifically Florida native plant species (Florida friendly), in new developments and redevelopment.

Policy 1.6.7: Once available, the City shall require the use of treated wastewater for irrigation in new development and redevelopment projects.

Policy 1.6.8: By 2012, the City shall develop a meter testing and leak detection repair program.

OBJECTIVE 1.7: Wellfields

Protect the City's natural drainage and recharge areas by retaining all existing natural water bodies.

Policy 1.7.1: The City shall implement the regulations of its Land Development Code, especially the environmental threshold reviews, wellfield protection provisions and retention

requirements for existing water bodies to protect aquifers through water conservation and preservation of the functions of aquifer recharge areas and to assure adequate pervious areas in conjunction with new development.

Policy 1.7.2: The City shall assist the County in enforcing the countywide wellfield protection ordinance through its code enforcement programs, by complying with Palm Beach County Department of Environmental Resource Management and all other appropriate agency requirements.

Policy 1.7.3: The City Utility District shall continue to monitor groundwater quality in the vicinity of the County's Dyer Boulevard landfill and resource recovery facility.

Policy 1.7.4: The City shall develop future wellfields consistent with Palm Beach County's Wellfield Protection Ordinance, when it can be determined through hydrologic testing that such operation would not adversely affect the natural resources or other management objectives of these resources.

OBJECTIVE 1.8: Water Supply Planning

The City shall plan for future water supplies through the adoption and scheduled updates of a Water Supply Work Plan and incorporate the alternative water supply projects identified in the SFWMD's regional water supply plan.

Policy 1.8.1: The City shall coordinate with the SFWMD and consider the latest version of SFWMD's regional water supply plan pursuant to s. 373.0361(2)(a) when developing or updating the City's Water Supply Work Plan.

Policy 1.8.2: The City's "Water Supply Plan" is adopted by reference and established to meet current and projected potable water needs based on the availability and appropriate use of regional water resources and the combined use of alternative water supplies. The City shall initiate revisions to the Work Plan and Comprehensive Plan for consistency with the City's Water Use Permit renewals at a minimum every 5 years or within 18 months after the SFWMD approves an updated regional water supply plan.

Policy 1.8.3: The City shall coordinate with other water utility providers, including municipalities, public and private utilities, regional water supply authorities, special districts, and the SFWMD to encourage the planning and development of multi-jurisdictional water supply facilities that are sufficient to meet projected demands for established planning periods, including the development of alternative water sources to supplement traditional sources of groundwater and surface water supplies.

Policy 1.8.4: The City shall coordinate with the SFWMD and other entities to assist with implementation of the provisions of the Regional Water Plan, Comprehensive Everglades Restoration Plan (CERP), and other regional water resource management and restoration programs, to evaluate the long-term needs of the natural and built environments, to monitor activities that may result in the degradation or over-utilization of potable water resources, and to assure adequate water supply for the competing needs of native ecosystems, agriculture, and domestic and industrial users.

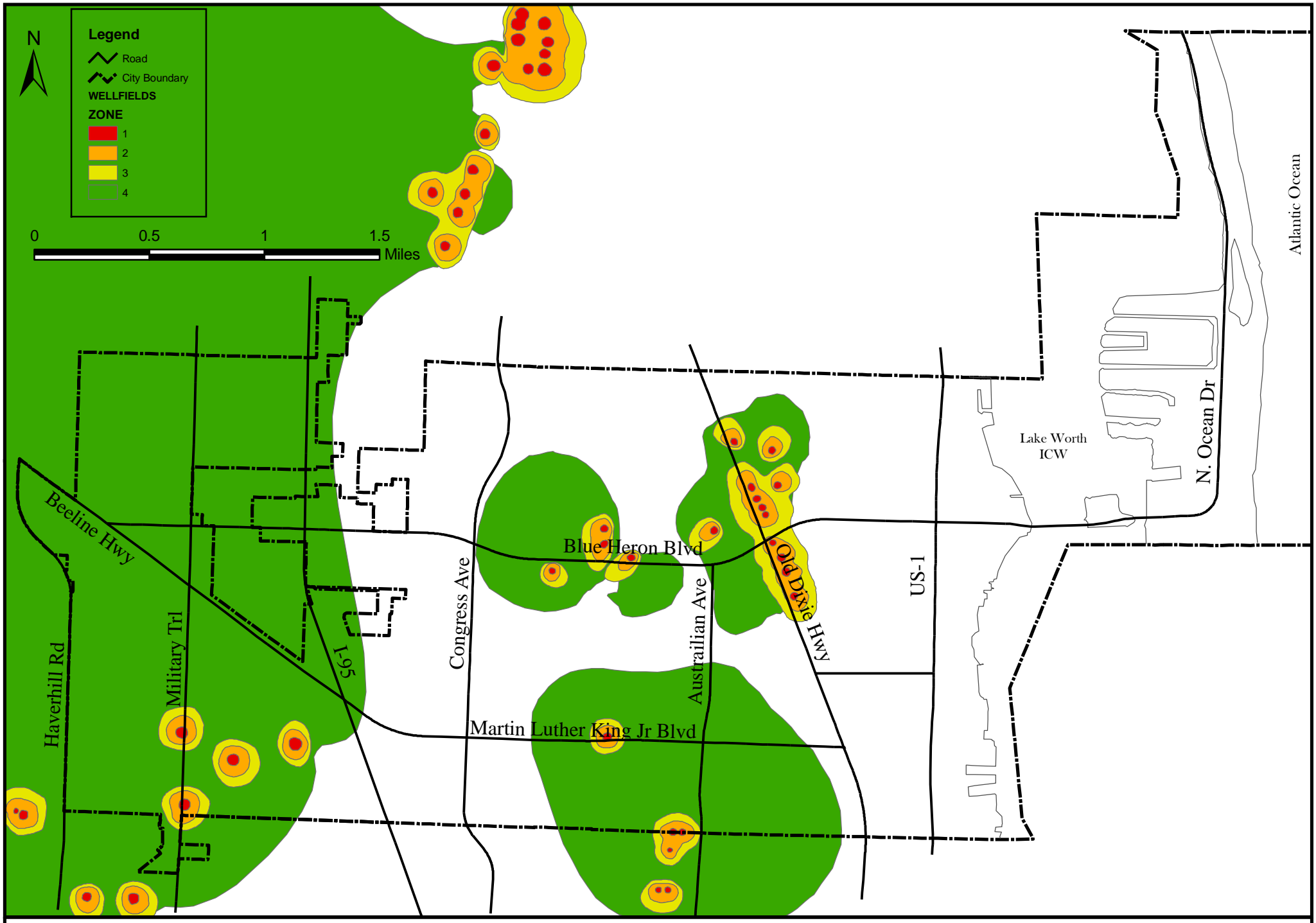


Figure I.1. Wellfield protection area zone. Source: Palm Beach County Environmental Resource Management 2009.

Policy 1.8.5: The City shall coordinate with the SFWMD and other entities to encourage wetland mitigation, environmental protection, and water management efforts that support and optimize the functions of the East Coast Buffer and the Water Preserve Areas.

Policy 1.8.6: The City shall coordinate with the SFWMD and other entities to give priority to water supply for native ecosystems and other areas with significant plant and animal life.

Policy 1.8.7: The City shall coordinate with the SFWMD and other entities to encourage and support a coordinated regulatory and programmatic approach for protection of aquifer recharge areas and for environmental protection efforts.

RECREATION AND OPEN SPACE ELEMENT GOALS, OBJECTIVES AND POLICIES

GOAL *To provide a broad range of public and private recreation and open space facilities and activities with convenient access for the citizens of Riviera Beach.*

OBJECTIVE 1.1: Waterfront Access

The City of Riviera Beach shall continue to preserve public access to all of its waterfront and enhance the 1,000 linear feet of city-owned, direct ocean beach park access.

Policy 1.1.1: The city shall continue to maintain direct public access to the City's municipal oceanfront beach from the Singer Island commercial center parking area, sidewalk, and beachfront. Ongoing redevelopment studies/efforts of this Ocean Mall site shall incorporate means to ensure that adequate and convenient public access to the waterfront is enhanced.

Policy 1.1.2: By 2010 the City shall identify publicly owned waterfront access points and their walkways with signage along AIA for use by the public.

Policy 1.1.3: The city shall maintain all public rights-of-way and open spaces that provide views or access to Lake Worth. Abandonment or relocation of these public rights-of-way will not be permitted without the provision of a qualitatively equal or better public right-of-way.

OBJECTIVE 1.2: Recreation Standards and Facilities

The City of Riviera Beach shall continue to maintain a system of public recreation facilities that meets the needs of the population.

Policy 1.2.1: The City shall continue to provide to the public the following neighborhood and community parks and recreation facilities: