



Press Release

Morse Boulevard will continue to be closed to all traffic from the intersection of Morse Boulevard and Singer Drive/Manor Drive to the intersection of Morse Boulevard and SR A1A through Friday, 10/15/2010 until 5:00 p.m.

Contact: City of Riviera Beach: (561) 845-4061 or

Target Engineering Group: (561)-939-3389

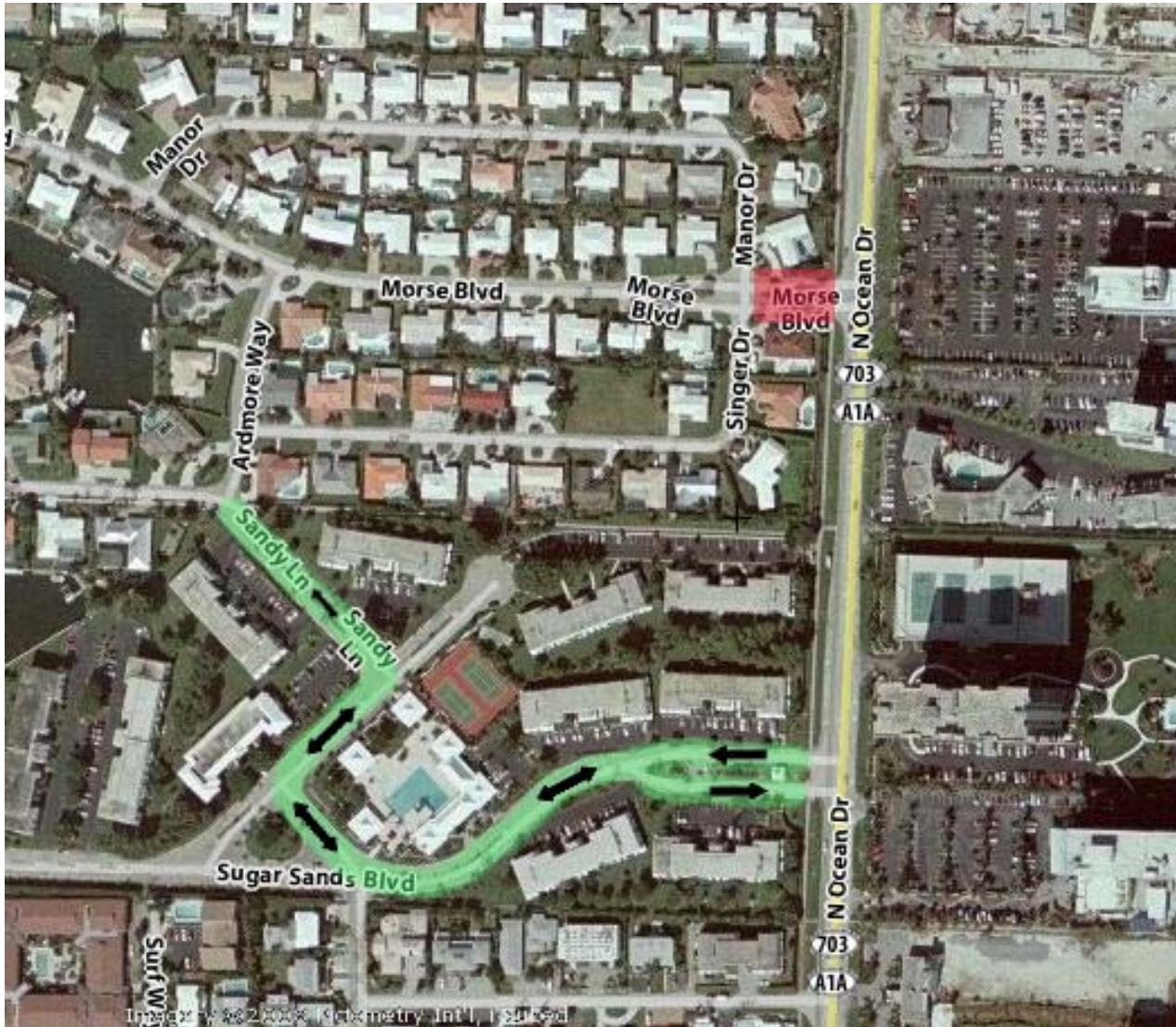
RIVIERA BEACH –Roadway closure to all traffic on Morse Boulevard between the intersection of Morse Boulevard and Singer Drive/Manor Drive to the intersection of Morse Boulevard and SR A1A. No traffic will be permitted in this blocked area. The closure began on Monday, October 4, 2010 at 8:00 a.m. and will continue through Friday, October 15, 2010 until 5:00 p.m. Detours for through-traffic will be provided via nearby Sugar Sands Boulevard and Sandy Lane.

The extended closure is due to unforeseen conditions and material acquisition necessary to modify an existing water main at the intersection of A1A & Morse Blvd and install new drainage pipes.

Pedestrian traffic will continue to be rerouted to the nearest safe crosswalk or sidewalk during the closure.

The City of Riviera Beach, in conjunction with the Florida Department of Transportation and the Federal Highway Administration has begun the East Blue Heron / SR A1A Enhancement Project. The Enhancements consist of drainage improvements, new water lines, sanitary sewer upgrades, landscaping, benches, decorative lighting, and resurfacing the roadway. The project begins at the intersection of US Highway One, proceeds East on Blue Heron Boulevard to Singer Island, then North on North Ocean Drive to the Riviera Beach city limits. The Project began in July 2010 and is expected to last approximately 18 months, excluding potential weather delays. For more information regarding the Enhancement Project, please call the City of Riviera Beach at (561) 845-4061 or Target Engineering at (561)-939-3389.

MAP OF CLOSURE MORSE BLVD



- ROAD CLOSURE
- DETOUR